

Pleasure-Way

2022 REKON 4X4

Mercedes-Benz Sprinter 2500 4x4



OWNER'S MANUAL

 **WARNING**

IT IS NOT SAFE TO USE COOKING APPLIANCES FOR COMFORT HEATING.

Cooking appliances need fresh air for safe operation.

Before Operation:

Open overhead vent or turn on exhaust fan.
Open Window.

FAILURE TO COMPLY COULD RESULT IN DEATH OR SERIOUS INJURY.

Unlike homes, the amount of oxygen supply is limited due to the size of the recreational vehicle, and proper ventilation when using the cooking appliances(s) avoids dangers of asphyxiation. It is especially important that cooking appliances not be used for comfort heating, as the danger of asphyxiation is greater when the appliance is used for long periods of time.

 **WARNING**

**DO NOT FILL CONTAINER (S) TO MORE THAN 80 PERCENT OF CAPACITY.
FAILURE TO COMPLY COULD RESULT IN DEATH OR SERIOUS INJURY.**

Overfilling the propane container can result in uncontrolled propane flow, which can cause fire or explosion. A properly filled container contains approximately 80 percent of its volume as liquid propane.

 **DANGER**


IF YOU SMELL PROPANE:

Extinguish any open flames, pilot lights and smoking materials.
Do not touch electrical switches.
Shut off the propane supply at the container valve(s) or propane supply connection.
Open doors and other ventilating openings.
Leave the area until the odor clears.
Have the propane system checked and leakage source corrected before using again.
Failure to comply could result in explosion resulting in death or serious injury.

 **WARNING**


Propane cylinders shall not be placed or stored inside the vehicle. Propane cylinders are equipped with safety devices that relieve excessive pressure by discharging propane to the atmosphere.

FAILURE TO COMPLY COULD RESULT IN DEATH OR SERIOUS INJURY.

 **WARNING:** Breathing diesel engine exhaust exposes you to chemicals known to the State of California to cause cancer and birth defects or other reproductive harm.

- Always start and operate the engine in a well-ventilated area.
- If in an enclosed area, vent the exhaust to the outside.
- Do not modify or tamper with the exhaust system.
- Do not idle the engine except as necessary.

For more information go to www.P65warnings.ca.gov/diesel.

 **WARNING:** Operating, servicing and maintaining a passenger vehicle or off-road vehicle can expose you to chemicals including engine exhaust, carbon monoxide, phthalates, and lead, which are known to the State of California to cause cancer and birth defects or other reproductive harm. To minimize exposure, avoid breathing exhaust, do not idle the engine except as necessary, service your vehicle in a well-ventilated area and wear gloves or wash your hands frequently when servicing your vehicle. For more information go to www.P65Warnings.ca.gov/passenger-vehicle.

Pleasure-Way

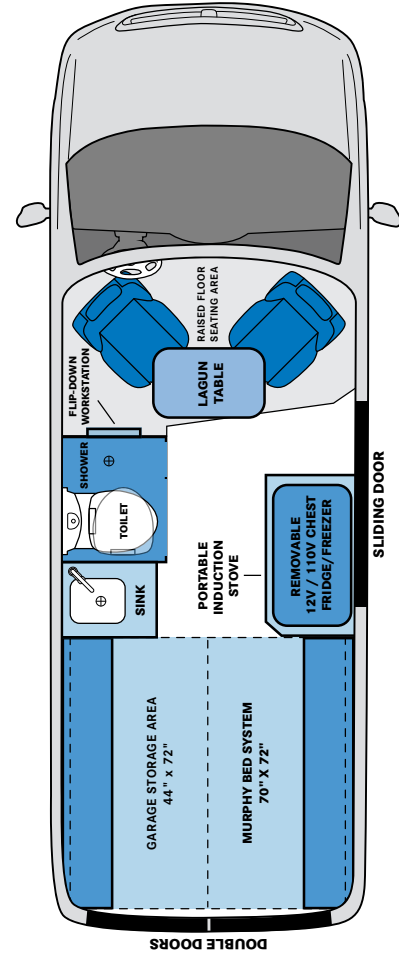
Pleasure-Way Industries Ltd. takes great pride in the quality and excellence that the Pleasure-Way name represents. We appreciate having you as a customer and welcome you into the Pleasure-Way family. This manual is provided to introduce you to the many features of your new Mercedes-Benz Rekon including operation, maintenance and warranties. We strongly advise you to take time to read this manual, the Mercedes-Benz Sprinter chassis owner's manual as well as those of the motorhome components before you use your new motorhome. It will help you to better understand the many operational features of this recreational vehicle.

After reading this manual, be sure to keep it in the motorhome as a reference. Your Pleasure-Way dealer will be glad to answer any further questions about the operation of your motorhome and the appliances.

All reasonable precautions have been taken in the preparation of this manual. We have been as accurate as possible at the time of this publication. However, due to our policy of continuous improvement and refinement to our product, Pleasure-Way reserves the right to make product changes at any time without prior notice and without incurring obligations. As a result, Pleasure-Way assumes no responsibility for errors or omissions in the accuracy of the content of this manual.

We know that you will enjoy your new Pleasure-Way and we wish you many miles of pleasant and carefree driving.

Happy Travels!



REKON 4X4



TABLE OF CONTENTS

i	WARRANTY/POLICIES
01	SAFETY
01	Occupant and Cargo Carrying Capacity
01	Smoke Detector
02	LP/Carbon Monoxide Detector
02	Fire Extinguisher
02	GFCI Outlet
03	Refueling
03	Filling The LP Gas Fuel Cylinder
03	Seat Belts
04	Appliances
04	Fridge
04	Vehicle Ground Clearance
04	Emergency Escape
05	MOTORHOME EXTERIOR
05	Chassis Paint Codes
05	Motorhome Dimension, Capacities, Specs
06	Appliance List
07	Tire & Loading Information
07	BBQ Quick Connect
07	Exterior 120-Volt Plug
07	Battery Vent
07	Porch Light
08	Power Awning
08	Exterior Shower
08	Water Heater Vent/Access Door
09	Waste Tank Compartment
09	Grey Water Connections

09	Furnace Vent
10	120-Volt 30 Amp Power
10	City Water Connection
10	LP Compartment
11	Fresh Water Fill and Vent
11	Fresh Water Tank Drain
11	Low Point Drain
12	Fan-Tastic Vent® Fans
12	Solar Panels
12	Air Conditioning (if equipped)
13	MAINTAINING YOUR MOTORHOME
14	TRAVEL PREPARATION
15	MOTORHOME SYSTEMS
15	Liquid Propane Gas System
16	BBQ Quick Connect
16	How to Use LP Appliances
17	Water Heater
18	Furnace
18	Fresh Water System
19	Fresh Water/Potable Water Tank
19	Fresh Water Tank Drain
19	Low Point Drains
20	Grey Water Connection
20	City Water Connection
21	Water Pump
21	Kitchen Faucet
22	Toilet
22	Waste Holding Tank

23	WINTERIZING
23	Winterizing The Water Systems
25	Optional Winterizing For Milder Climates
26	Winter Storage Electrical
27	LIVING AREA ELECTRICAL SYSTEMS
27	Voltage Chart
28	AC 110-120 Volt Power
28	Inverter/Charger
29	Inverter Display/Control Panel
30	AC Electrical Distribution Panel
30	GFCI Outlets
30	12 Volt Battery Disconnect Switch
31	Charge Line Disconnect
31	Mastervolt DC-DC Charger
31	DC Breakers for the Mastervolt DC-DC Charger
32	Chassis Battery
32	Chassis Battery Disconnect
32	Coach Batteries
34	Real Time Clock Fuse
35	Solar Panel Fuses
35	DC Load Center (G12)
37	DCD Panel
37	Fiamma Awning (Control Center)
37	Water Heater/Furnace (Bridge Module)

38	TOUCHSCREEN CONTROL PANEL
38	Home Page
40	DC Power/Coach Batteries
41	Lighting Page
41	Mechanical Page
42	Settings Page
43	Diagnostics
45	MOTORHOME INTERIOR
45	Interior Cockpit Map Light
45	Cooktop
45	Fridge/Freezer
46	Wet Bath/Gear Locker
46	Fan-Tastic Vent® Fan
47	Solar Panel Package
47	Air Conditioning (if equipped)
48	USB Charging Port
48	Front Cab Privacy Shades
48	Table
49	Murphy Bed Layout
50	Rear Workstation
51	Jack & Jack Tools
52	TIRE SAFETY
57	REPORTING SAFETY DEFECTS
58	MAINTENANCE LOG



WARRANTY / POLICIES

CUSTOMER RESPONSIBILITY

It is very important that you read and understand the information provided to you in the package containing all the manuals, information and warranties pertaining to your Pleasure-Way Motorhome, its appliances and components, as well as the chassis and tires.

Please familiarize yourself with all terms and conditions of this Limited Warranty, as well as all other applicable warranties, including, but not limited to, the warranty for the chassis, tires, batteries, microwave, television, awning, refrigerator, stove, fan, toilet, air conditioner, etc. These warranty and operator's manuals contain important cautions, warnings, operational, maintenance and warranty information on the chassis, tires, the Motorhome, its components and appliances. **All information, requirements and recommendations in these owner's manuals and warranties should be reviewed and followed for your safety.**

You are responsible to ensure that the procedures for obtaining warranty repairs for your Motorhome are followed properly. It is your responsibility and obligation to return your Motorhome in a timely manner to an authorized Pleasure-Way dealership for warranty service repairs.

As the owner of the Motorhome, you are responsible for regular and proper maintenance performed in a timely manner in accordance with the Pleasure-Way and OEM manuals provided. Regular and proper maintenance and operation of your Motorhome, including correct load weight and distribution, is required under this Limited Warranty and failure to do so voids this Limited Warranty.

FIVE-YEAR, NON-TRANSFERABLE LIMITED WARRANTY

Subject to the exclusions, terms and conditions specified further in this document, Pleasure-Way Industries Ltd. ("Pleasure-Way") warrants the specified new Pleasure-Way Motorhome ("Motorhome") free from defects in material and craftsmanship on portions manufactured by Pleasure-Way under **normal recreational travel/camping use** and service, reasonable wear and tear excluded, for 60 months/60,000 miles/100,000 kilometers, whichever comes first, after the date of purchase by the **first retail purchaser** from an authorized Pleasure-Way dealer. **This Pleasure-Way Limited Warranty is non-transferable to sequential owners.**

TERMS AND CONDITIONS FOR OBTAINING WARRANTY REPAIRS:

Warranty repairs must be within the five year or 60,000 miles / 100,000 kilometers, whichever comes first, limited warranty.

All warranty work required to be done on the chassis or any of its parts or components must be taken to an authorized Mercedes Benz, Ford or Chrysler dealership (depending on your chassis make) and processed through their warranty procedures. Pleasure-Way will not reimburse any claims regarding the chassis or any of its parts or components or tires. Please be advised that tires are covered under a separate warranty that is included with your chassis information and warranty package.

Pleasure-Way will not reimburse any claims for work done on any components, parts or appliances that are not manufactured by Pleasure-Way or that are covered under their respective manufacturer's warranties. These warranties must be claimed through the manufacturer of the appliance or component. Examples include, but are not limited to: batteries, refrigerator, microwave, roof air-conditioning, water pump, furnace, awning, TV, fan, etc.

Pleasure-Way warranty registration cards must be on file before any claims will be processed. Claims made without warranty registration cards will be rejected until proof of ownership can be established.

To obtain warranty repairs, you must contact an authorized Pleasure-Way dealer and schedule an appointment. It is best if you have a written list of your maintenance schedule, repairs, defects or items in need of repair. As the owner, you are solely responsible for the maintenance of the motorhome as required or recommended by the owner's manual and associated costs of that maintenance. Repairs necessitated by failure to properly operate, correctly load, or maintain the Motorhome in a timely manner as required or recommended are not covered by warranty.

Please note that Pleasure-Way is not responsible for booking, scheduling or transporting your Motorhome for warranty or service purposes. Further, Pleasure-Way does not control the scheduling of service work at authorized or independent dealerships. You may encounter some delay in scheduling or completion of work.

Any and all warranty work must be performed and fulfilled by an authorized Pleasure-Way dealer or authorized Pleasure-Way service facility. For emergency repairs while traveling, you may choose to deal with non-authorized RV service facilities; however, all warranty repairs must be pre-authorized by Pleasure-Way.

Pleasure-Way will pay for the removal and re-installation of motorhome components only if Pleasure-Way deems it absolutely necessary to perform chassis warranty repairs. Pleasure-Way will not reimburse any costs in the removal and re-installation of these components if it is: out of the warranty period, non-warranty repairs, and/or routine maintenance or service or covered by the chassis manufacturer.

Pleasure-Way will, at its sole option, replace or repair, free of charge (including reasonable related labor charges), any defective part within the warranty period subject to any exclusions or limitations outlined in this Limited Warranty. The purchaser shall notify their authorized Pleasure-Way dealer within 10 days of this repair and the obligation of Pleasure-Way under this warranty is expressly limited to such replacement or repair. Your sole and exclusive remedy for breach of this Limited Warranty is monetary damages in an amount equal to the actual cost of material and/or labor necessary to repair or replace defective parts that were not repaired or replaced under this Limited Warranty. Pleasure-Way's sole and exclusive obligation is to repair any defects, subject to the exclusions, terms and conditions outlined in this document, discovered within the warranty coverage period if: (1) within 10 days of your discovery of a defect you notify Pleasure-Way or an authorized Pleasure-Way dealership of the defect; AND (2) you deliver your Motorhome to an authorized Pleasure-Way dealership at your cost and expense.

Pleasure-Way specifically excludes and disclaims any and all incidental and consequential damages, and shall not be liable for any such damages, including but not limited to, all expenses, costs, fees and charges related to: transportation, towing, loss of time, loss of pay, loss of use, inconvenience, commercial loss (including but not limited to lost wages or lost profits), bus/taxi/air fares, vehicle rental, fuel, service call charges, gasoline, internet, telephone, facsimile transmissions, lodging, food, loss or damage to personal property or items stored inside or outside of the Motorhome, loss of or damage to Motorhome, condensation or moisture damage such as mold and mildew as well as rust and corrosion, etc. This exclusion and disclaimer is independent of any failure of the essential purpose or validity of any warranties provided with the Motorhome, and shall survive any determination that a warranty is invalid or failed of its essential purpose. Some states or provinces may not allow the exclusion or limitation of incidental or consequential damages, and, if so, the above limitation or exclusion may be limited or may not apply to you. This Limited Warranty gives you specific legal rights, and you may also have other rights which vary from state to state and/or by province.

Please note the distinction between “defect” and “damage”. “Defect” means the failure of the workmanship performed and/or materials used to conform with the design and manufacturing specifications and tolerances of Pleasure-Way. However, Pleasure-Way has no control over “damage” caused by such things, for example, as collision, misuse, improper loading or lack of maintenance that occurs after the Motorhome is delivered to the owner. Therefore, “damage” which occurs for any reason after the Motorhome is delivered is not covered under this Limited Warranty. Maintenance services are also excluded from this Limited Warranty because it is the owner’s responsibility to maintain the Motorhome. Please note that exclusions from warranty claims are specified further herein.

Pleasure-Way reserves the right to change specifications, operating instructions, floor plans, standards and options on any and all products and Motorhomes built and/or sold by it at any time without notice and without incurring any obligation to maintain spare parts and without incurring any obligations to make the same or similar changes on motorhomes previously built and/or sold by Pleasure-Way.

This Limited Warranty is expressly in lieu of any and all other warranties, express or implied, including any implied warranty of merchantability or fitness for a particular purpose and of any other obligations or negligence or liabilities on Pleasure-Way. There is no warranty of any nature made by Pleasure-Way beyond that contained in this Limited Warranty. No person or entity has authority to create, imply, enlarge, amend or modify any warranty beyond that contained in this Limited Warranty. The dealer, servicing entity or representatives (including any and all employees) are not Pleasure-Way’s agent. Pleasure-Way is not responsible for any undertaking, representation or warranty, made by any dealer, servicing entity, employee, representative or others beyond those expressly set forth within this Limited Warranty. TO THE EXTENT PERMITTED BY APPLICABLE LAW, ALL IMPLIED WARRANTIES AND CONDITIONS, INCLUDING IMPLIED OR STATUTORY WARRANTIES AND CONDITIONS OF MERCHANTABILITY, FITNESS FOR A PARTICULAR OR NORMAL PURPOSE, QUALITY, DURABILITY, AND AGAINST LATENT DEFECTS, ARE HEREBY DISCLAIMED. TO THE EXTENT IMPLIED WARRANTIES ARE NOT PERMITTED TO BE DISCLAIMED UNDER APPLICABLE LAW, THIS WARRANTY EXPRESSLY LIMITS ALL WARRANTIES, INCLUDING BUT NOT LIMITED TO, BOTH EXPRESS AND IMPLIED WARRANTIES, INCLUDING THE IMPLIED OR STATUTORY WARRANTIES AND CONDITIONS OF MERCHANTABILITY, FITNESS FOR A PARTICULAR OR NORMAL PURPOSE, QUALITY, DURABILITY, AND AGAINST LATENT DEFECTS, AND ALL OTHER LIABILITIES OF PLEASURE-WAY.

When you request and accept the performance of warranty repairs under the terms of this Limited Warranty, you are accepting all terms of this Limited Warranty, including by way of example, warranty limitations, time limits and disclaimers. If any term or condition in this Limited Warranty conflicts with your state’s legislation, the provisions of your state’s legislation are varied as allowed for by law.

This Limited Warranty is not a warranty that promises or extends to future performance of this Motorhome or any of its materials, components or parts because this Limited Warranty does not make a representation on how your Motorhome or any of its materials, components or parts will perform in the future but instead represents only what the remedy will be if a manufacturer’s defect exists subject to the terms, exclusions and conditions herein.

Unless prohibited by law, repairs will not extend or suspend the time when you must commence a breach of warranty claim and shall not extend the warranty coverage period set out herein. Any performance of repairs after the warranty coverage ends or any performance of repairs to those portions of your Motorhome excluded from coverage shall be considered “good will” repairs and confers no obligation for other similar future repairs. Further, nothing in this Limited Warranty, including, but not limited to, “good will repairs” or any action of Pleasure-Way or its agents or representatives shall be interpreted as extending, waiving or altering the terms, limitations, exclusions and conditions of this Limited Warranty and shall not, under any circumstances whatsoever, extend the warranty coverage period or limitation period. Pleasure-Way is not obliged to notify you if repairs are considered “good will repairs.”

WHAT THIS LIMITED WARRANTY DOES NOT COVER:

This Limited Warranty shall not apply to the following:

1. In the event that the Motorhome has been altered outside our factory in any way so as, in our sole opinion and discretion, to affect its performance, stability, safety, operation or reliability.
2. Deterioration due to wear and tear or exposure, including but not limited to: upholstery, flooring, rust, corrosion, window, door and vent seals, oxidation, fading, and cosmetic blemishes.
3. In the event that the Motorhome, in our sole opinion and discretion, has been subject to misuse, abuse, neglect, negligence, accident, improper load distribution or overloading.
4. In the event that the Motorhome was not purchased as a new retail unit from an authorized Pleasure-Way dealer.
5. In the event that the Motorhome has been declared a total loss by an insurance company, or a motorhome title indicates that is designated as “salvage”, “junk”, or “rebuilt” or word of similar impact.
6. The automotive chassis and tires, which are covered solely and exclusively by their own manufacturers’ warranties, including by way of example, but not limited to: power train, engine, brakes, axles, drive-train, and muffler. To learn more about the specific automotive chassis and tires not covered under the Pleasure-Way Limited Warranty, please contact your authorized selling Pleasure-Way dealer, Pleasure-Way Industries Ltd., or review your Mercedes Benz, Ford or Chrysler warranty package information provided with the Motorhome.
7. Appliances, parts and components not manufactured by Pleasure-Way or covered by their own warranties, including but not limited to: the microwave, refrigerator, stove, heater, television, toilet, batteries, awning, generator, fan, furnace, air conditioner, etc. To learn more about specific components, parts or appliances not covered under the Pleasure-Way Limited Warranty, please contact your authorized selling Pleasure-Way dealer, Pleasure-Way Industries Ltd., or review your warranty package information provided with the Motorhome.
8. Unauthorized repairs, alterations, customizations, additions or modifications and any defects or damage caused by such items or repairs
9. Routine maintenance and service items, including without limitation: caulking, lubricants, sealants, tightening screws, latches, locks, combustion systems, changing fuses or light bulbs, winterization or storage preparations, maintaining the air conditioning, electrical, plumbing and heating systems, etc.
10. Imperfections that do not affect the suitability of the Motorhome for its intended purpose of recreational travel or camping use or items that are working as designed but which you are unhappy with because of the design or function.
11. Damages caused by any and all Acts of God and/or environmental factors, including but not limited to: hail, tornadoes, sandstorms, lightning, floods, earthquakes, hurricanes, airborne fallout, fire, rain, wind and all other environmental conditions, which may include but are not limited to, tree sap, tar, chemicals, oils, salts, ocean spray, road hazards, stone chips, infestations, and rodents
12. Damage, defects or repairs required, due to or arising from, including but not limited to: accident, negligence (whether foreseeable or not), collision, vandalism, theft, fire, flood, harsh chemicals or abrasive cleaners, de-icing agents, waxes or other chemicals applied to the Motorhome or its components, power washers, rust or corrosion, hydraulic leveling jacks or leveling system, unregulated water pressure, tank overfill, or plumbing system or electrical system modification or alteration, improper installation, addition, repair or modification, improper stowing of contents and equipment, overloading or improper balancing or distribution of the load, voltage/amperage irregularities such as low or high voltage, reverse polarity, open ground or neutral and lack of amperage to operate equipment, power surges, off-road use, abuse, neglect or misuse of the Motorhome and/or its equipment, appliances, components, and/or chassis, failure to properly winterize the Motorhome and/or its components, improper, untimely or inadequate maintenance or service of the Motorhome and its components, failure to follow instructions or maintenance outlined in the manuals supplied with the Motorhome, etc.

13. Failure to seek and obtain repairs in a timely manner. Damage caused by failure to address warranty issues in a timely fashion will not be covered by this warranty, additional expenses will be the responsibility of the owner.
14. Failure to use reasonable efforts to mitigate damage.
15. Odometer tampering or failure to comply with the instructions set forth in the owner's manuals.
16. Exterior storage compartments may not be moisture-free due to weather and humidity conditions. It is advised that you store items accordingly. Pleasure-Way is not responsible for goods damaged while stored in exterior storage compartments.
17. Condensation and the results of condensation including, but not limited to, water damage and the growth of mildew or mold inside or outside of the Motorhome. Mold and mildew inside and outside of the Motorhome are natural growths given certain environmental conditions and are not covered by the terms of this warranty.
18. Wheel alignments or adjustments to axles, tire wear or failure, and glass damage. Aluminum wheels are not warranted against corrosion or damage that is a result of road salt, sea salt, cleaning chemicals or harsh driving conditions and excessive pressure from power washers.
19. Improper electric power supply or improper vehicle hook up to other facilities and failure to properly ventilate the vehicle.
20. Changes, modifications, or additions made to other Pleasure-Way motorhomes manufactured after this Motorhome. This is not an engineer upgrade warranty.
21. Failure of the Motorhome, tires and/or chassis and related components and parts resulting in incidental damages, costs, fees, or expenses, including but not limited to: loss or damage to personal property, items or goods stored both inside and outside the Motorhome, loss of use and equipment of Motorhome, loss of time, inconvenience, commercial loss (including loss of wages or profits), cost of rental vehicle, cost of accommodations, travel expenses (including taxi, bus, air fares), towing, fuel, meals, telephone, internet and any and all other miscellaneous and incidental expenses. Some provinces and states do not allow exclusions or limitations of incidental or consequential damages, so the above limitations or exclusions may be limited or may not apply to you.
22. This Motorhome is not designed for four season use. Failure to properly winterize your Motorhome or operating your Motorhome in freezing conditions may cause damage to your Motorhome that is not covered under this Limited Warranty.
23. This Motorhome has been designed solely for its intended purpose of recreational camping and personal use; it is not intended for use as a full-time quarters or permanent residence. Pleasure-Way makes no warranty whatsoever with regard to any Motorhome that has been used other than for temporary recreation purposes, including, but not limited to, use of the Motorhome for residential, commercial, rental, revenue generating or business purposes, or any Motorhome not registered and regularly used in the United States or Canada. For the purposes of this Limited Warranty, it shall be deemed conclusive evidence of commercial, rental or business purposes if the Motorhome is licensed, titled, registered or insured in the name of any corporation, LLC, partnership, or any other form of business or commercial entity. If the Motorhome owner or user files a tax form claiming a business or commercial tax benefit or income related to the Motorhome, it shall be irrefutable that the Motorhome has been used for rental, commercial or business purposes.
24. The importing or exporting or shipping of the Motorhome out of the country of original licensing or titling (Canada or United States) voids this Limited Warranty from the time the Motorhome is imported or exported and at all times thereafter. Costs, expenses, and damages arising from or related to the following are not covered by this Limited Warranty.

THE CONDITIONS OF THIS LIMITED WARRANTY SHALL NOT APPLY TO DEGENERATION DUE TO WEAR AND TEAR AND EXPOSURE AFTER THESE LIMITATIONS:

For **NINETY (90) DAYS** from the original retail purchase date by the original retail purchaser from an authorized Pleasure-Way dealer: any and all adjustments to compartment door latches, hinges, light bulbs, fuses, remote and smoke detector batteries.

For **ONE (1) YEAR** from the original retail date purchase date or 12,000 miles/20,000 kilometers, whichever comes first, by the original retail purchaser from an authorized Pleasure-Way dealer:

- Lithium batteries
- Control touch panels and control boards
- All seat, curtain, door panel, ceiling and wall fabrics used in the coach
- Blinds
- Window seals and caulking
- Exterior latches and locks
- Exterior doors and hatches, including but not limited to, utility centre door and power cable hatch
- City water fill and exterior shower
- Porch light and interior LED lighting
- Exterior cable TV outlet
- GFCI outlet
- Carpet
- Linoleum
- Black and grey water termination valves, sewer hose and connections
- Table legs and base
- Cabinet latches and hardware
- Shower pan, window and fan shrouds
- Propane regulator
- Generator exhaust brackets
- Exterior striping
- Painted plastic exterior body molding and bumpers. Please note that painting exterior moldings magnifies the original equipment manufacturer condition of the plastic molding. Some conditions of the plastic, such as but not limited to, body attachment points, imperfections and differences in texture may be more visible when painted. These are considered normal and are not covered under this Limited Warranty.

For **TWO (2) YEARS** or 24,000 miles or 40,000 kilometers, whichever comes first, by the original retail purchaser from an authorized Pleasure-Way dealer:

- Ultraleather fabrics
- Propane lines
- Foam used in cushions

For **THREE (3) YEARS** or 36,000 miles or 60,000 kilometers, whichever comes first, by the original retail purchaser from an authorized Pleasure-Way dealer;

- Exterior painted fiberglass surfaces.

It cannot be emphasized enough that it is your responsibility as the Owner of your Motorhome to review all manuals and warranties regarding your Motorhome, its components, appliances and chassis for your safety and for the proper operation and maintenance of your Motorhome, its components and appliances and the chassis. In particular, we remind you that heavier items should not be stored in upper cabinets. Please ensure weight is distributed evenly in the cabinet and storage areas. Use caution when opening doors and cabinets as items may have shifted during travel. When storing your motorhome, ensure there is adequate ventilation to eliminate high humidity, heat and extreme dry conditions. In cool/cold conditions, ensure that there is adequate ventilation to exhaust humidity and off gassing of appliances. Please note that Pleasure-Way Motorhomes are not intended for four season use and failure to properly winterize or using the Motorhome in freezing conditions may cause damage that is not covered under warranty. For example and without limiting the generality of the foregoing, the Tofino roof struts and fabric can be damaged if the roof is lifted during freezing conditions.

MERCEDES-BENZ WARRANTY

BASIC LIMITED WARRANTY

- Coverage - 3 years or
- 36,000 miles/60,000 kms

DIESEL ENGINE LIMITED WARRANTY

- 5 years
- 100,000 miles / 160,000 kms

ROADSIDE ASSISTANCE

- 3 years
- 36,000 miles / 60,000 kms

SAFETY

For your safety while traveling with your Pleasure-Way Motorhome, we have provided safety components throughout the vehicle. In order for your vehicle to maintain the safest possible conditions, these components must be tested and maintained on a regular basis, according to the detailed manufacturer's operating instructions.


All Pleasure-Way Motorhomes in Canada are CSA (through QAI) and CMVSS certified, and may exceed the approved installation criteria.

All Pleasure-Way Motorhomes in the United States are FMVSS certified and bear the R.V.I.A. seal of approval, and may exceed the individual state requirements.

OCCUPANT AND CARGO CARRYING CAPACITY

The Tire and Loading Information label, found on the driver side door pillar, states the OCCC of your motorhome. This figure states the maximum allowable weight of all occupants (including the driver), plus the weight of all food, tools, full fresh water tanks, and personal belongings. The tongue weight of a towed trailer also counts as cargo. If you are traveling with water in your holding tank, weight can be calculated by using this ratio: 1 kg/L or 8.3 lb/gal.

The OCCC of your motorhome was calculated by adding the weight of: the full LP fuel tank, the full vehicle fuel tank and the dry weight of the motorhome (as shipped from the factory) and subtracting that number from the Gross Vehicle Weight Rating (GVWR).



TIRE AND LOADING INFORMATION
RENSEIGNEMENTS SUR LES PNEUS ET LE CHARGEMENT

Seating Capacity: Total: Front: Rear:

→ The combined weight of occupants and cargo should never exceed kg or lbs

TIRE PNEU	SIZE DIMENSIONS	COLD TIRE PRESSURE PRESSION DES PNEUS A FROID	SEE OWNER'S MANUAL FOR ADDITIONAL INFORMATION VOIR LE MANUEL DE L'USAGER POUR PLUS DE RENSEIGNEMENTS FD-332
FRONT AVANT	<input type="text"/>	<input type="text"/>	
REAR ARRIERE	<input type="text"/>	<input type="text"/>	
SPARE DE SECOURS	<input type="text"/>	<input type="text"/>	

NOTE: All US units include a second OCCC label on the inside of the passenger door.

SMOKE DETECTOR

A smoke detector is located on the ceiling of your unit near the front. Smoke detectors may give you a warning of fire and smoke, but only if used and maintained in accordance with the manufacturer's instructions.

This device should be tested after each time your vehicle has been in storage, before each trip, and at least once each week during your travels.

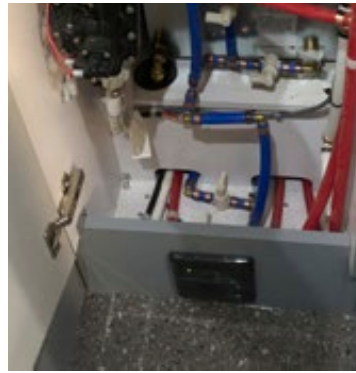
Do not block air circulation in the area where the smoke detector is located. Ensure you connect the battery inside the detector upon receiving your new unit. (9 volt battery located inside the unit.) Install a fully charged fresh battery at least once a year.



LP/CARBON MONOXIDE DETECTOR

A liquid propane (LP)/carbon monoxide (CO) gas detector is located near the floor level at the rear of the motorhome interior below the sink cabinet. This detector will detect liquid propane gas, carbon monoxide and other gases that are heavier than air. The detector is powered by the coach batteries and will only operate when the 12 volt battery disconnect switch is ON. Your components that require LP gas are provided with complete ventilation to the exterior and are sealed off to the interior for your added safety. This detector is powered by the auxiliary battery and is operating at all times unless the battery is disconnected or red disconnect is turned off.

The detector should be tested after each time your vehicle has been in storage, before each trip, and weekly while the vehicle is in use. The test procedure should be performed in accordance with the manufacturer's instructions. Do not block air circulation in the area where the detector is located.



NOTE: The LP/CO detector will sound to indicate a low coach battery voltage.

FIRE EXTINGUISHER

A 3-pound capacity fire extinguisher is provided and located at the side door main entrance for ease of accessibility from the interior or exterior.

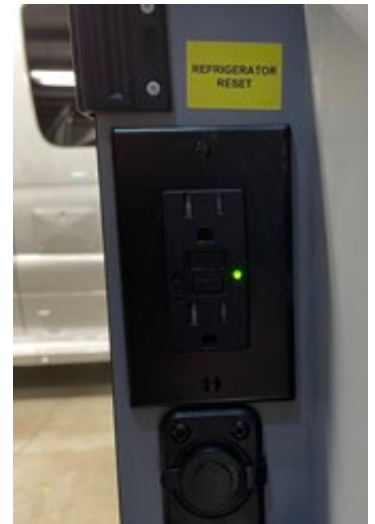
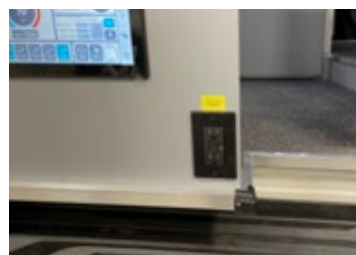
WARNING: This fire extinguisher is a type "ABC", which will extinguish wood/paper, flammable liquids and electrical fire. You should inspect the extinguisher at least once a month according to the manufacturer's instructions.



GFCI OUTLET

Three ground fault circuit interrupter (GFCI) 110-volt receptacle provides protection against line-to-ground electrical shock hazards that could be harmful or even fatal. The main GFCI is behind the fridge on the cabinetry. The GFCI for the induction outlet is located on the exterior face of the entry cabinet, this controls the kitchen cabinet plug. The fridge receptacle is on the inner face of the entry cabinet.

The GFCI receptacles are to be tested at least once a month in accordance with the manufacturer's instructions.



REFUELING

When you are refueling your fuel tank or your propane system, ensure that your vehicle and your main LP valve is shut off. Ensure your LP appliances (furnace, water heater) are shut off so ignition will not activate.

Some appliances in your vehicle have auto ignition. Ensure the appliances are shut off so ignition will not activate.

WARNING: *Even with the main LP valve shut off there is enough LP gas in the lines for the appliances to ignite.*



FILLING THE LP GAS FUEL CYLINDER

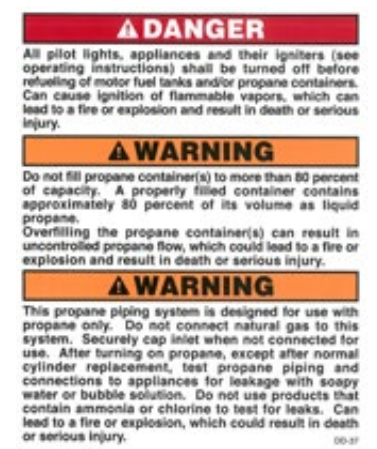
Your motorhome is equipped with a removable 20 lbs LP tank. Turn off the valve on the top of the LP tank before removing the tank from the vehicle. When you are filling the LP gas tank, remove the LP tank from the vehicle by removing the two wing nuts on the metal clamp bracket, removing the bracket, disconnecting the LP hose and lifting the tank out of the vehicle.

Only qualified personnel should refuel your propane tank. Ensure all LP appliances are in the off position.

Do not store gasoline or other flammable liquids inside your vehicle.

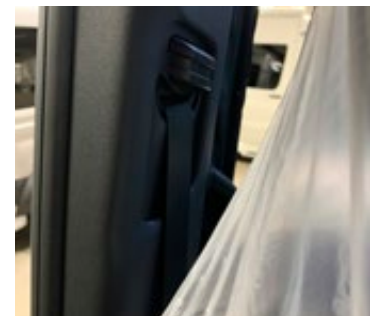
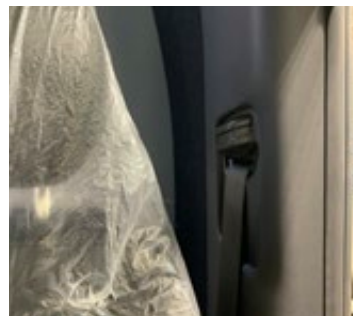
NOTE: *Do not refuel the propane tank to more than 80% of its capacity. Liquid will appear at the breather valve at 80%. To reduce the danger of fire and/or explosion, do not store gasoline or other flammable liquids inside your vehicle.*

WARNING: *Ensure the propane system valve is turned off when the vehicle is in motion. It is not safe to travel while propane appliances are in use. The propane switch is located in the driver side utility center.*



SEAT BELTS

Only forward-facing seats equipped with factory installed seatbelts are to be occupied while the vehicle is in motion. The passengers, if any, must be seated in the passenger seat only, with the seat belts fastened while the vehicle is in motion.



APPLIANCES

It is not safe to use cooking appliances to heat the interior of the coach due to the danger of asphyxiation. It is recommended that you read all of the appliance owner / operating manuals prior to using the appliances.



TRUMA PORTABLE FRIDGE

Ensure the locking straps for the fridge are fully engaged and secured when the vehicle is in motion. The locking straps are from the base of the cabinet through the front and rear handles on the fridge.



VEHICLE GROUND CLEARANCE

Your motorhome is equipped with no underside holding tanks, waste tanks, plumbing lines, propane lines and other RV related items. However, please still be careful when driving your motorhome on uneven or poorly maintained roadways.



EMERGENCY ESCAPE

If the need to make an emergency escape from the interior of your motorhome arises, all exterior doors are equipped with access latches. Your choices of escape routes are as follows: the main entrance at the side door, the driver and passenger side front doors and the rear doors.

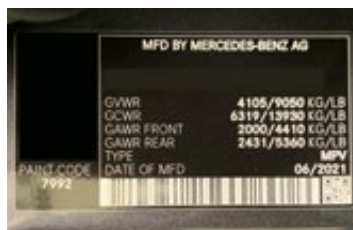


MOTORHOME EXTERIOR

CHASSIS PAINT CODES (MERCEDES-BENZ SPRINTER CODES)

Silver - 9744 | Steel Blue - 7755 | Charcoal Grey - 7992
Paint codes located on the driver seat base by opening the zipper flap and lifting the right hand flap.

Paint codes are subject to change please consult the driver seat base label.



MOTORHOME DIMENSIONS AND CAPACITIES

3.0 litre V6 Diesel | 188 HP Rating / 325 FT-LBS Torque | 7 Speed Auto Transmission | 144" Wheel Base

Your motorhome is larger than your standard van or automobile, so please be careful when entering underpasses, garages, parkades, etc. Towing capacity is based on GCWR 13,930- GVWR 9,050 = 4,880 pounds if the vehicle when loaded is less than 9,050 pounds. This weight can be added to the towing capacity up to the Mercedes-Benz hitch rating, rear axle and Mercedes-Benz Sprinter limitations as listed in the Mercedes-Benz Sprinter manual. The hitch tongue weight must be included in the loaded weight of the vehicle.

DIMENSIONS

Length (Bumper to Bumper)	233" - 19' 5"	592 cm
Length (Bumper to Hitch Step)	238" - 19' 10"	604.5 cm
Overall Height (No A/C)	113" - 9' 5"	287 cm
Overall Height (A/C)	119" - 9' 11"	302 cm
Interior Standing Height	75" - 6' 3"	190 cm
Width with Mirrors Extended	95" - 7' 11"	241 cm
Width with Mirrors Retracted	85" - 7' 1"	216 cm
Towing Capacity	4,880 lbs	2,213.5 kg

CAPACITIES

Fuel	24 US gal	90.8 litres	171 lbs
Fresh Water Tank (Potable)	40 US gal	151.4 litres	333.6 lbs
Grey Water Tank (Sinks / Shower)	10 US gal	37.9 litres	83.4 lbs
Liquid Propane (LPG) (at 80%) (Portable)	4.75 US gal	18 litres	20 lbs
Cassette Toilet Tank	4.75 US gal	18 litres	39.6 lbs

CHASSIS SPECIFICATIONS

GVWR	9,050 lbs	4,105 kg
GCWR	13,930 lbs	6,319 kg
GAWR Front	4410 lbs	2000 kgs
GAWR Rear	5360 lbs	2431 kgs
Tires (all)	LT245/75R/16	
Rims (all)	7.5j x16"	
Tire Pressure Front	47 psi	320 KPA
Tire Pressure Rear	70 psi	480 KPA
Tire Pressure Spare	70 psi	480 KPA

APPLIANCES**MANUFACTURER****MODEL**

Portable Fridge / Freezer	Truma Cooler C60	C60 US
Air Conditioner	Dometic	640312CXX1CO
Cooktop	Tru Induction	TI-1B
Water Pump	Shurflo	4008-101-A65
Water Heater	Truma AquaGo Comfort Plus	DLE60CP
Toilet	Thetford 200866SP	C223CS-U06X30C01
Furnace	Truma	Vario Heat Comfort
Awning	Fiamma	F65 Eagle 10'6" 0693F13R
Solar Panel	Carmanah (100 watt)	CTI - 100M
Solar Control	GoPower!	GP-RV-30-MPPT
Inverter / Charger	Xantrex Freedom XC 2000	817-2080
DC to DC Charger	Mastervolt	Mac Plus 12/12-50
Coach Batteries	ECO-ION Lithium 100 AH	Life PO4
Roof Vent	Dometic	FV8300LWUSF8

NOTE: All measurements and capacities are approximations. Every effort has been made to be as accurate as possible.

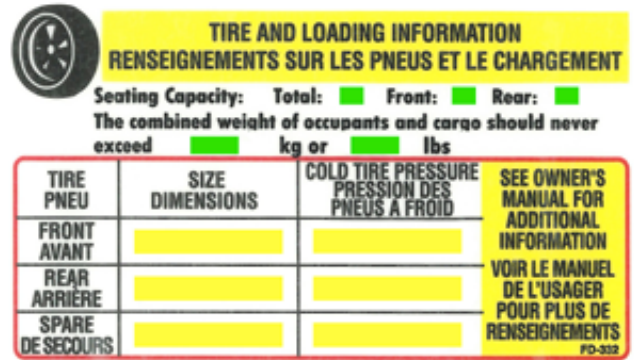
NOTE: Remember that the height of your Motorhome may vary depending upon the tire pressure level, and optional components mounted on the roof. The width of your vehicle will vary with the position of the outside mirrors. In addition, all measurements are approximations.

PLEASE NOTE:

- Appliances and options may change without notice and some appliances and equipment may be optional.
- Due to Pleasure-Way's policy of continuous improvement, Pleasure-Way Industries Ltd. reserves the right to make product changes at any time without incurring obligation.
- The chassis manufacturer may make mechanical and option changes without Pleasure-Way Industries Ltd. incurring any obligation.
- Pleasure-Way Industries Ltd. cannot be held responsible for changes made to an appliance supplied by another distributor or manufacturer.
- Pleasure-Way Industries Ltd. cannot be held responsible for dealer installed options.

TIRE AND LOADING INFORMATION

The tire and loading information is located on the driver side door pillar. On this label you will find your tire size as well as cold tire pressure rating. Also found on this label is the seating capacity along with the occupant and cargo carrying capacity of your motorhome. Please refer to your specific label for accurate information.



TIRE AND LOADING INFORMATION
RENSEIGNEMENTS SUR LES PNEUS ET LE CHARGEMENT

Seating Capacity: Total: Front: Rear:
 The combined weight of occupants and cargo should never exceed kg or lbs

TIRE PNEU	SIZE DIMENSIONS	COLD TIRE PRESSURE PRESSION DES PNEUS A FROID	SEE OWNER'S MANUAL FOR ADDITIONAL INFORMATION VOIR LE MANUEL DE L'USAGER POUR PLUS DE RENSEIGNEMENTS
FRONT AVANT	<input type="text"/>	<input type="text"/>	FD-323
REAR ARRIERE	<input type="text"/>	<input type="text"/>	
SPARE DE SECOURS	<input type="text"/>	<input type="text"/>	

BBQ QUICK CONNECT

BBQ quick connect are located on the driver side rear, exterior corner of the vehicle.

(for more information see page 16)



EXTERIOR 120-VOLT PLUG

Located on the passenger side panel behind the rear wheel, this plug will only function if power is supplied through the inverter or shore power. This plug is controlled by the GFCI, located behind the fridge on the cabinetry.



BATTERY VENT

Located on the passenger side rear panel beside the tail light. Keep this vent area clear as it will allow the battery compartment to vent to the outside of the coach.



PORCH LIGHT

Located on the 10" touchscreen control panel next to the main entrance door. Select the porch light button to turn ON/OFF the porch light. This button can be on the HOME screen and/or the LIGHTING page.



POWER AWNING

Please refer to the manufacturer's operating instructions for further information.

The awning is located on the passenger side of the roof, this is a 10'6" Fiamma electric awning controlled by the switches located on the rear touchscreen control panel. The 12 volt battery disconnect switch must be in the ON position to operate the awning.

Touch the mechanical symbol at the bottom of the rear touchscreen control panel. Press and hold either the EXTEND or RETRACT buttons to operate.

The awning is a legless self-supporting awning with a seismic sensor that will automatically retract the awning in windy conditions. The awning is equipped with a LED light strip located on the extension rail of the awning. This light strip is controlled by the lighting page of the touchscreen control panel.

CAUTION: *Never leave the awning extended when you are away from your motor home. The seismic sensor will react to windy conditions, however a sudden large gust of wind may not trigger the awnings retract feature before damage occurs.*

NOTE: *The awning will not operate if the vehicle ignition is in the on position.*



EXTERIOR SHOWER

Located beside the vehicle fuel fill door, this compartment contains a retractable shower head and hot and cold water taps.

NOTE: *When winterizing your motorhome be sure to winterize this tap and the shower hose.*



WATER HEATER VENT

Located on the driver side, mid body, this vent gives you access to the exterior working components of the Truma AquaGo on demand water heater.

During regular use the OFF/ON switch can be left in the ON position; the water heater will only come on when hot water is being used when you have the switch set to Eco or Comfort mode. Turn your water heater off when the motorhome is in storage.

NOTE: *Ensure this vent is free and clear of obstructions at all times.*



WASTE TANK COMPARTMENT

Please refer to the manufacturer's operating instructions for further information.

Located on the driver's side, mid body. This compartment gives you access to your toilet tank for dumping and filling purposes. The removable toilet tank will slide out of this compartment door. Allows disposal of the black water in the toilet into a sewer dump location.



GREY WATER CONNECTIONS

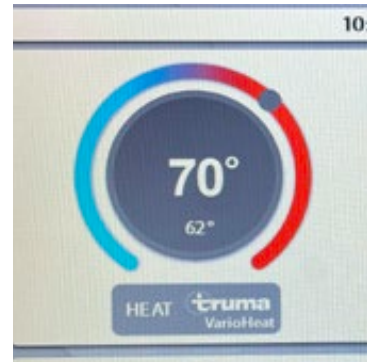
Located on the driver's side, lower mid body. Connect the Y connection (in the blue bag) to each of these ports and terminate the Y connection onto one of the portable grey water tanks. The portable grey water tanks are stored inside the vehicle in the driver rear cabinet, lift and remove the crossbar to remove the tanks. Ensure the vent is open on the tank when connected. Always dispose of the grey water in a safe location such as a sewer/sink drain.



FURNACE VENT

Located above the driver side rear wheel next to the water heater, this vent gives off the exhaust of the furnace.

NOTE: *Ensure this vent is free and clear of obstructions at all times.*



120 VOLT 30 AMP POWER

The Rekon is equipped with a 30 amp power cord and outlet located on the driver's side mid body. When connecting this power cord it is recommended that you connect to the vehicle before connecting to a power source. Always ensure the power cord is locked onto the vehicle with the locking ring.

NOTE: *It is recommended that when hooking up to a shore power source that a surge protector should be used to protect the electrical system of the coach.*



CITY WATER CONNECTION

The Rekon is equipped with a city water connection located mid body on the driver side of the vehicle. This city water connection will accept a garden hose connection.

NOTE: *It is recommended that a water pressure regulator is used when connected to city water.*



LIQUID PROPANE COMPARTMENT

Located on the driver side rear quarter panel. This compartment houses the removable 20 pound LP tank with gauge and the LP regulator.



FRESH WATER FILL AND VENT

The Rekon is equipped with a 40 gallon fresh water tank located under the raised floor in the rear of the coach. To fill this potable fresh water tank open the passenger rear door of the vehicle. Remove the potable water cap and insert a clean fresh water hose. You can monitor the filling of the fresh water tank on the 10" touchscreen control panels. Your fresh water will be full when water appears at the vent next to the fill opening.

To sanitize the tank add 1/3 cups of bleach to a 2/3 tank of water. Drive the vehicle allowing the water to slosh in the tank. Drain and flush the tank with fresh potable water.

NOTE: *It is recommended that you use a water filter when filling this tank, unless you use a known good water source.*



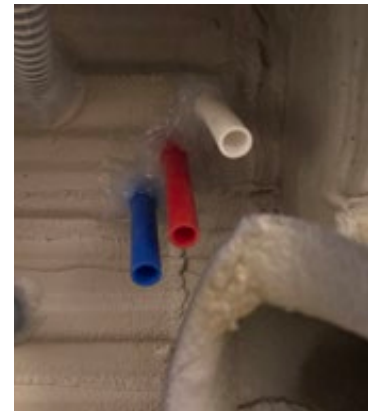
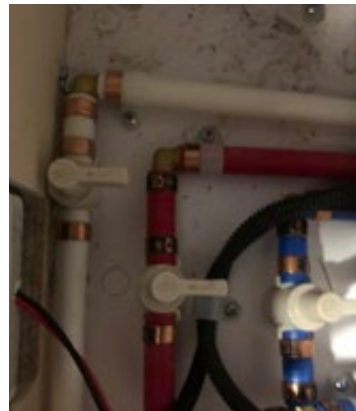
FRESH WATER TANK DRAIN

The fresh water tank drain is located below the coach on the driver side of the spare tire.



LOW POINT DRAIN

These drain lines are located under the driver side of the vehicle directly below the water heater vent. The valves for these drains are located on the floor in the cabinet below the sink. There will be three valves, the red water line valve for the hot water lines, the blue water line valve for the cold water lines and the white water line valve for the water heater recirculation valve.

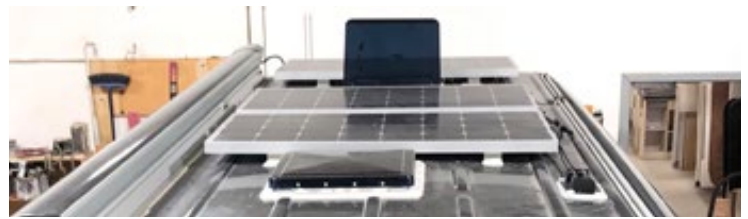


FAN-TASTIC VENT® FAN

These dual bi-directional Fan-tastic Vent fans will quickly move air in and out of the coach. The two 14" vents are located on the roof-top, one close to the bathroom door that intakes and second above the bed/workstation that exhausts. This fan is equipped with a rain sensor that automatically closes when wet. The controls for the fan are located on the 10" touchscreen control panels on the MECHANICAL page.

NOTE: If your Rekon is equipped with an air conditioner you will only have one vent fan.

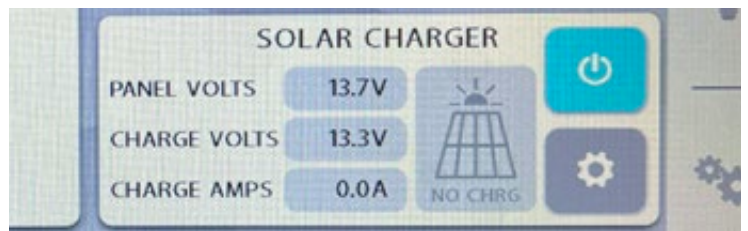
(for more information see page 46)



SOLAR PANELS

Your vehicle is equipped with 400W Carmanah solar panels that charge the battery bank through the GP-RV-30-MPPT solar controller. The charge controller is mounted in the center cabinet on the passenger side. The red key disconnect just below the solar control must be locked in the on position in order for the solar panels to charge. The controls for the solar panel are located on the HOME page of the touchscreen control panels.

(for more information see page 47)



AIR CONDITIONER (IF EQUIPPED)

Your vehicle may be equipped with the 11,000 BTU low profile Dometic air conditioner. The controls for the air conditioner are located on the HOME page of the touch screen control panels.

(for more information see page 47)



MAINTAINING YOUR MOTORHOME

It is recommended that you regularly maintain your Pleasure-Way Motorhome in order to get the maximum benefits from your unit. The life and performance of each component depends upon proper use, operation and maintenance.

With a regular maintenance schedule you should be able to identify any components that may need attention, allowing you to have many years and miles of trouble-free traveling.

NOTE: Please refer to your Mercedes-Benz Owner's manual for chassis mechanical maintenance.

HELPFUL HINTS

- To maintain your exterior painted fiberglass and metal surfaces we suggest you thoroughly clean and wax these pieces regularly. All fiberglass surfaces are painted with automotive paint.
- When storing your Pleasure-Way motorhome it is recommended that you park the vehicle on a level surface. Damage to the motorhome as a result of incorrect parking will not be covered under warranty.
- When storing your Pleasure-Way motorhome, ensure all holding tanks are emptied and flushed, the water system is completely drained, including the water heater, the LP gas valve is turned off, the 12 volt battery disconnect switch is switched to the OFF position, and all electrical appliances are turned off.
- When storing your Pleasure-Way motorhome it is recommended that you run your vehicle engine once a month to allow the engine starting battery to recharge and the vehicle fluids to flow through the engine. Please refer to your vehicle operation manual for more details.
- It is recommended that once a year that you check all seals around the roof components like roof vent, plumbing stacks, etc. and side wall items such as furnace vent, etc., of the vehicle.
- It is recommended that you lubricate with a dry lubricant all awning joints and window cranks yearly.



TRAVEL PREPARATION

BEFORE YOU LEAVE

Prior to heading off on your adventures, you should always check to ensure that:

- The LP gas is off at the main valve switch
- All black and gray waste water tanks are empty, with the dump handles closed
- All electrical cords and exterior hoses are stored back into their respective compartments
- Chassis fluid levels are at recommended levels
- Chassis tire pressures are at recommended levels
- Chassis exterior lighting is functional
- All exterior components are secure and closed
- All interior doors and drawers are closed and locked into position
- All interior components are secure and in place
- The furnace control switch on the touch screen is off
- Vents are in a closed & locked position
- All cabinet doors are closed
- The driver and passenger cab seats are in the forward facing, locked position
- The campsite is left in better condition than when you arrived
- The Lagun table is stored away or locked into travel position

WHILE IN MOTION

While in motion, set the refrigerator to operate in DC mode. Use of any other appliance is not recommended while the motorhome is in motion.

- Always wear your seat belt when the vehicle is in motion.
- Only forward facing seats are equipped with seat belts.
- There are only two designated seating areas with seat belts that are safe to use while the vehicle is in motion.

WARNING: *Do not use LP appliances while the vehicle is in motion.*

UPON ARRIVAL AT YOUR SITE

Once you arrive at a site:

- Ensure your motorhome is parked in a level position so that your components will work at optimum performance (place a bubble level in the freezer shelf of the refrigerator to use as a base and level your unit accordingly).
- Ensure all exterior vents are clear from obstructions.
- Ensure the black and gray water waste tank valves are closed.
- Hook up your 110 volt power cord to your coach and then to the site receptacle (if supplied at site). A surge protector is recommended.
- Hook up your fresh water hose to the city water pressure connection (if supplied at site), it is recommended for pressurized city water that you use a pressure regulator.
- Turn the LP gas on.
- Turn the water heater on.

MOTORHOME SYSTEMS

LIQUID PROPANE GAS SYSTEM

LP appliances are: Water Heater and Furnace

Your motorhome is equipped with a Liquid Propane (LP) gas system that provides a fuel source to the appliances which are designed to use this gas for operation. The storage tank is located in the driver rear LP storage compartment. This compartment houses the removable 20 pound LP tank with gauge and the LP regulator. This is a DOT tank that will have to be replaced or recertified according to the Provincial or State law. The valve to open and close the LP tank is at the top of the tank.

The regulator for the LP system is located on the right hand side of the compartment. This compartment is vented through the floor of the compartment.

An LP gas regulator must always be installed with the diaphragm vent facing downward. Make sure that the regulator vent is not blocked.

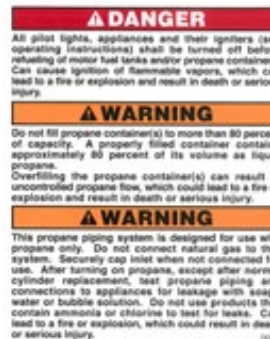
NOTE: *Your LP gas appliances may not light on the first try. There may be air in the LP gas lines that will dissipate as the gas pressurizes the lines. To reset the furnace or water heater turn off the battery switch for 5 seconds and turn it back on.*

NOTE: *Ensure the propane system valve is fully shut when vehicle is in motion. It is not safe to travel while propane appliances are in use. Do not store gasoline, LP gas or other flammable liquids inside your vehicle.*

WARNING: *DO NOT FILL LP CONTAINER TO MORE THAN 80% CAPACITY. Overfilling the LP gas container can result in uncontrolled gas flow, which can cause a fire or explosion. A properly filled container will contain approximately 80% of its volume of LP gas.*

IF YOU SMELL GAS:

1. Extinguish any open flames and all smoking materials.
2. Do not touch any electrical switches.
3. Shut off the gas supply at the tank valve or gas supply connection.
4. Open all the doors and other ventilating openings.
5. Leave the area until the odor clears and you are sure there is no further risk to you.
6. Have the gas system checked and leakage source corrected before using it again.



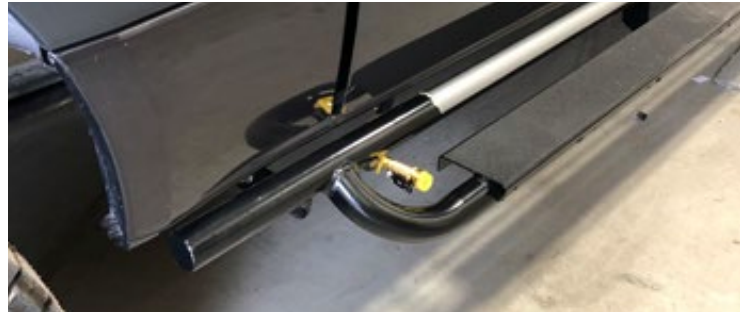
WARNING: *Do not bring or store LP gas containers, gasoline or other flammable liquids inside the vehicle, as a fire or explosion may result. LP gas containers should not be placed or stored inside the vehicle as LP gas containers are equipped with safety devices that relieve excessive pressure by discharging gas into the atmosphere.*

WARNING: *It is not safe to use cooking appliances for comfort heating. Cooking appliances need fresh air for safe operation. Unlike homes, the amount of oxygen supply in the unit is limited due to the size of the vehicle. Proper ventilation when using the cooking appliance(s) will avoid the danger of asphyxiation. It is especially important that cooking appliances not be used for comfort heating as the danger of asphyxiation is greater when the appliance is used for a long period of time. Therefore, before operation, be sure to open a source of ventilation. Portable gas stoves or gas cooking appliances should not be use inside the vehicle.*

WARNING: *Do not use portable fuel burning equipment, including wood and charcoal grills and stoves inside the motorhome. The use of this equipment inside the recreational vehicle may cause fire, or asphyxiation.*

BBQ QUICK CONNECT

The BBQ quick connect is directly connected to the RV LP system. It is equipped with its own shut-off valve (black handle). The quick connect is a regulated (low pressure) LP line that is supplied from the onboard LP tank. The BBQ quick connect works with the standard, full-flow male quick connect fitting. You will need a BBQ that is set-up for a low pressure LP source.



BASIC OPERATION:

1. Ensure the black valve is in the OFF position.
2. Remove the yellow cap and ensure the opening is clean.
3. Pull the sleeve of quick connect back and insert the male quick connect fitting.
4. Push the male fitting until the sleeve snaps forward, locking the fitting into the socket.
5. Connect your BBQ.
6. Turn the black valve ON to allow propane to flow to the connected BBQ.
7. Ensure the propane tank valve is in an open position.



NOTE: Propane will only flow from the BBQ quick connect when there is a hose connected. This is a safety feature of this component. The black valve must be in the OFF position to release the hose from the quick connect.

HOW TO USE THE LP APPLIANCES

Turn ON the 12 volt battery disconnect switch, located below the entrance touchscreen control panel.

Twist the manual LP valve to OPEN on the LP tank.



WATER HEATER

Please refer to the manufacturer's operating instructions for further information.

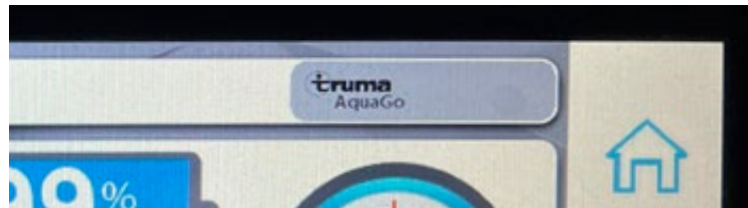
The water heater is located under the kitchen sink. Access to the working mechanism of the water heater is through the outside, vent door located mid-body on the driver side.

TRUMA AQUAGO® COMFORT PLUS (DLE60CP)

The Truma AquaGo® Comfort Plus water heater is a hybrid water heater that combines the instant hot water source with a 1/3 gallon water tank, and a recirculation system to provide a continuous flow of hot water.

BASIC OPERATION:

1. Turn on the 12 volt battery disconnect switch.
2. Open the valve on the LP tank.
3. Turn on the water heater switch inside the exterior water heater door. (this must be done before the water heater is turned on by the touch screen control panel)
4. Turn on the water heater switch on the touchscreen control panel.
5. Start the water flow on hot at a medium flow and adjust to the desired temperature.



WATER HEATER BYPASS VALVES

OPEN: the handle is parallel to the water line.

CLOSED: the handle is 90 degrees to the water line.

SUMMER MODE

All the bypass valves are horizontal

OPEN: the bypass valve on the red line (hot water), blue line (cold water) and white line (circulation).

CLOSE: the bypass valve that connects the blue line from the bottom to the red line from the top.

WINTER MODE

All the bypass valves are vertical

CLOSE: the bypass valve on the red line (hot water), blue line (cold water) and white line (circulation).

OPEN: the bypass valve that connects the blue line from the bottom to the red line from the top.

SUMMER MODE



WINTER MODE



NOTE: Remove the water heater filter for winter storage.

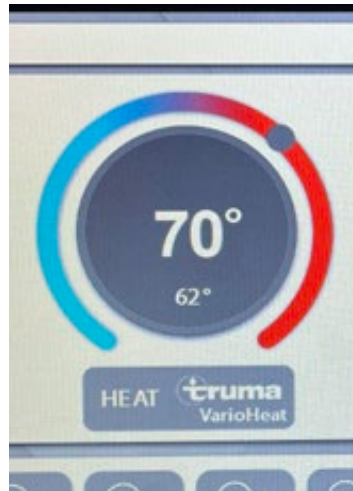
For winterizing instructions see page 23.

FURNACE

Please refer to the manufacturer's operating instructions for further information.

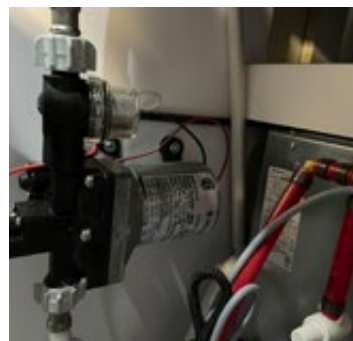
Your vehicle is equipped with a Truma VarioHeat 11,500 BTU furnace. It is a LP gas and 12 volt appliance. The furnace is located under the driver side cabinet behind the grey tanks. To access the the furnace, remove the grey water tanks and the cover panel behind the grey tanks. The thermostat is controlled by the touchscreen control panel.

1. Ensure that there is propane supplied to the coach.
2. Ensure there is 12V power to the coach.
3. Turn on the Truma control from the icon on the touchscreen, adjust the temperature by moving the dot around the scale.
4. When you start the furnace, the furnace fan will run to clear the system, then the flame will ignite and start the heating process. The furnace will maintain the desired temperature. (see Truma VarioHeat manual for setting information)
5. If the furnace fails to ignite the first time you turn it on it will try to ignite another three times . If the furnace does not ignite, it will go into lock out mode. Wait five minutes then turn off the battery switch and turn it back on. This will reset the furnace, turn the furnace on at the touchscreen and set the temperature.
6. The furnace has a communication module, a 2amp fuse and the CP plus control located in the small cabinet next to the sink. The CP communicates with the touchscreen through the bridge module. The CP plus panel will show faults and give you a code for troubleshooting.



FRESH WATER SYSTEMS

The water system built into your motorhome provides full service similar to the system in your home. A 12-Volt self-priming pump draws pressurized water from the fresh water tank to all cold faucets and the water heater. An automatic pressure switch located in the water pump maintains a positive line pressure between 20 to 30 psi. The fresh water tank is in a compartment below the raised floor in the rear of the coach, this is a heated compartment. The gray water tanks are located in the cabinet next to the sink, these are portable water tanks. The portable black water tank is part of the cassette toilet and it can be accessed through the toilet door on the outside of the coach.



FRESH WATER / POTABLE WATER TANK

The Rekon is equipped with a 40 gallon fresh water tank located under the raised floor in the rear of the coach. To fill this potable fresh water tank open the passenger rear door of the vehicle. Remove the potable water cap and insert a clean fresh water hose. You can monitor the filling of the fresh water tank on the touchscreen control panel. Your fresh water will be full when water appears at the vent next to the fill opening.

To sanitize the tank, add 1/3 cup of bleach to a 2/3 tank of water. Drive the vehicle allowing the water to slosh in the tank. Drain and flush the tank with fresh potable water.

NOTE: *It is recommended that you use a water filter when filling this tank, unless you use a known good water source.*



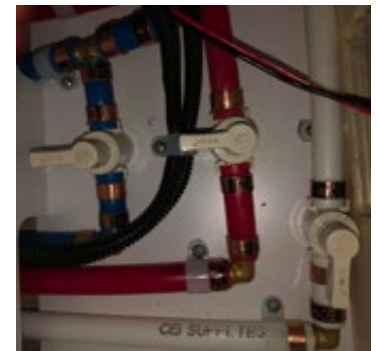
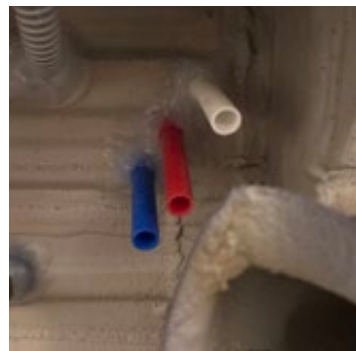
FRESH WATER TANK DRAIN

The fresh water tank drain is located below the coach on the driver side spare tire. This drain is connected directly to your fresh water tank and will allow you to drain the fresh water tank when the vehicle is not in use.



LOW POINT DRAINS

The vehicle is also equipped with low point drain valves. These valves will allow you to drain all the fresh water lines in the vehicle. The low point drains are located under the driver side of the vehicle directly below the water heater vent. The valves for these drains are located on the floor in the cabinet below the sink. To use these drains ensure all water taps and the toilet valve are in an open position.



RED: Hot water line **BLUE:** Cold water line
WHITE: Recirculation line

GREY WATER CONNECTIONS

The portable grey water tanks are stored inside the vehicle in the driver side rear cabinet lift and remove the cross bar to remove the tanks. Connect the Y connection (in the blue bag) to each of these ports and terminate the Y connection onto one of the portable grey water tanks. Ensure the vent is open on the tank when connected. Always dispose of the grey water in a safe location such as a sewer/sink drain.



CITY WATER CONNECTION

The city water connection is located in the driver side mid-body. The city water connection is a convenience for you when you have access to an outside, pressurized water source. The city water system bypasses the fresh water holding tank and feeds the water lines directly so that you will not have to use the water pump. When hooking up the city water connection you should make sure that the water pump switch is turned OFF and that all water faucets are CLOSED.



NOTE: *It is advisable to use a water pressure regulator because excessive pressure may result in water line damage.*

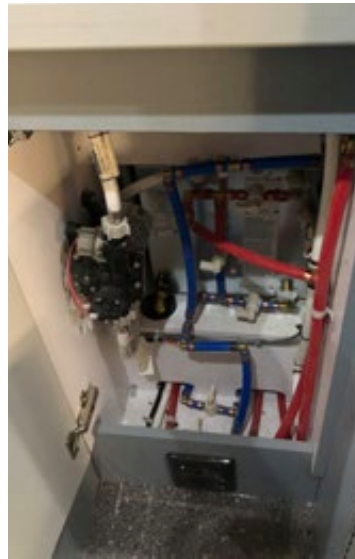
1. Remove the insert from the city water connection.
2. Attach a garden hose to the connection using a rubber washer to ensure the fitting is tight.
3. Turn the water source on to medium pressure.
4. Check for leaks at the city water connection, as you may have to re-tighten this connection.
5. To disconnect the city water system, first turn off the water source, then open a faucet to relieve some of the pressure in the lines, and then unhook the water line.

WATER PUMP

The water pump is located below the sink in the lower cabinet.

The inline flow filter is located on the inlet side of the water pump. If the pump will not prime, ensure:

- there is water in the holding tank
- that the battery is not run down
- the waterlines are tight to the pump and to the filter
- there are no leaks at the inlet fitting and filter (if air is leaking into inlet fittings, tighten fittings or apply clamps as necessary);
- the inline flow filter is clean

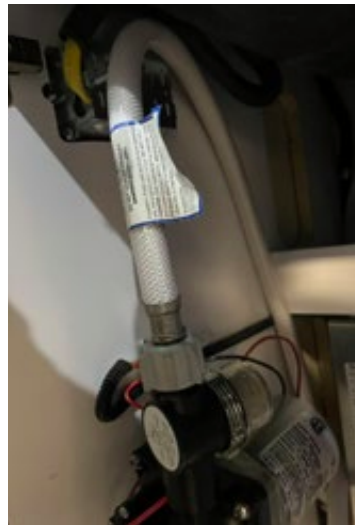


If the water pressure drops, ensure that:

- the faucet aerators are clean
- there is water in the holding tank
- the battery is not run down
- the faucets and connections are free of leaks

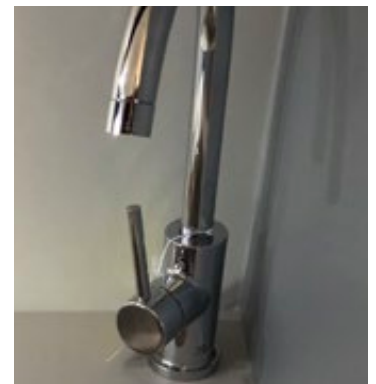
If the pump runs when there is no apparent demand for water, ensure that:

- there is water in the holding tank;
- all faucets and fixtures are shut off and not leaking;
- the water lines are free of leaks.



KITCHEN FAUCET (DURA #NMK531-CP)

With the faucet handle in the OFF position, the faucet may continue to drip for a short period of time or when the vehicle is moving. Water is retained in the faucet spout.



TOILET

Please refer to the manufacturer's operating instructions for further information.

The Motorhome is equipped with a Thetford 200866SP cassette toilet. This toilet is connected into the water system and receives water from the fresh water tank or city water. To turn the toilet bowl, use both hands to rotate to desired position (max. 90° clockwise and 170° counterclockwise).



WASTE-HOLDING TANK

Please refer to the manufacturer's operating instructions for further information.

The waste-holding tank is located on the driver side mid body exterior. The holding tank compartment gives you access to your toilet tank for dumping purposes.

Your motorhome is provided with 1-level indication for the waste-holding tank so when the slide turns from GREEN to RED, the tank is full. The removable toilet tank will slide out of this compartment door. Always dispose of the black water in the toilet into a sewer dump location.



WINTERIZING

The Rekon was designed to be used in below freezing temperatures. However, if you plan to store your Rekon for the winter season and it will be exposed to freezing temperatures, follow the winterizing process below to protect the water system. If you plan to use the Rekon during the winter season please refer to the, "Winter Use Manual" for proper operating instructions.

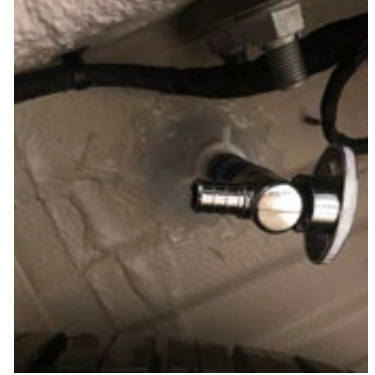
WINTERIZING THE WATER SYSTEMS

1. Drain the fresh water tank by opening the drain tap on the fresh water tank. The fresh water tank drain is located below the coach between the hitch rails on the driver side of the spare tire. Leave this drain open for storage.
2. Drain the grey water into the holding tank then safely dump the grey water holding tanks. Leave the Y hose connection attached to the exterior drains. When you run antifreeze through the sink and shower faucets it will simply drain out of this hose onto the ground.

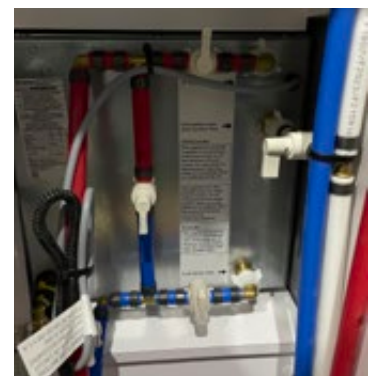
For cleaning and sanitizing the grey water holding tanks fill them half way with clean water. Put ¼ cup of bleach in each tank, close the caps and shake the tank allowing bleach water to reach all corners and sides of the tank. Drain the bleach water from each tank and leave the caps off each tank allowing the tanks to dry, reinstall the caps and store the tanks.

3. Remove the waste-holding tank from the cassette toilet. Dump and flush the waste-holding (black water) tank. Re-install the tank back into the cassette toilet. (see the Thetford user manual for instructions.)
4. Open the sink lower cabinet door to access the back of the Truma water heater and the bypass valves. Relieve the pressure on the water system by opening the sink tap in the center position.
5. Turn the bypass valves on the top red line, bottom blue line and the white center line to the closed position. (The handle is closed when it is turned 90 degrees to the water line.)

Open the valve that is located where the blue line coming up from the bottom and the red line coming down from the top are connected. (The handle is open when it is parallel to the water lines)



SUMMER MODE



WINTER MODE

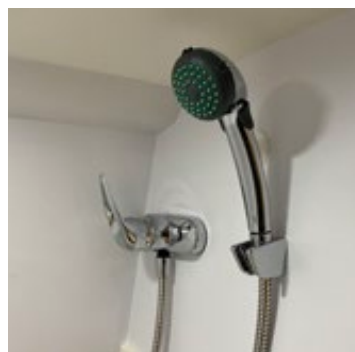
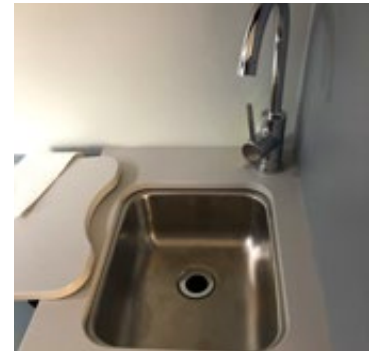
- Open the exterior door to the Truma water heater. Turn the electrical switch to the OFF position. Open the water heater drain by lifting the black latch on the top of the yellow easy drain lever. Lower the drain lever until the water filter opens.
- With the filter removed, inspect and clean the water filter. Inspect the "O" rings on the filter as found on page 16 of the Truma water heater manual. Remove and store the water filter for winter, do not leave it in the water heater.

NOTE: It is advised that you follow the Truma recommendations for decalcification of the water heater. These instructions can be found on page 17-21 of the Truma water heater manual.

- Remove the water line from the inlet side of the water pump (this is the white, braided line going into the water pump filter). Connect a siphon hose to the inlet side of the water pump and place the other end in a container of non-toxic, RV antifreeze.

NOTE: Siphon hose consists of 40" of 1/2" clear tubing with a fitting to attach to the water pump. The fitting can be purchased through an RV dealer.

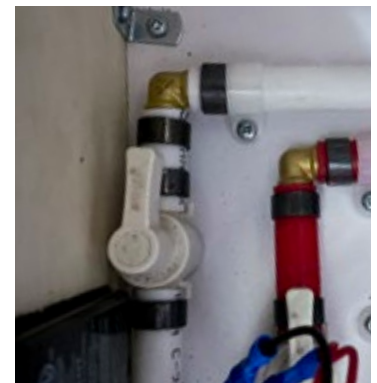
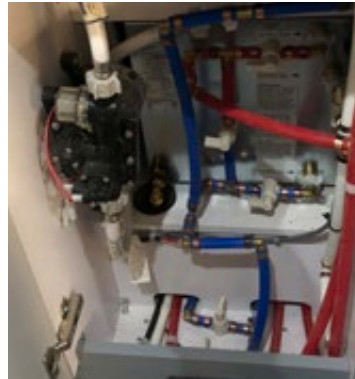
- Open the kitchen faucet, bathroom faucet and exterior shower one at a time allowing the antifreeze to flow through both the hot and the cold water valves. Close the faucets once antifreeze begins to flow through. Open the toilet valve and allow antifreeze to flow into the toilet bowl.



10. Remove the cassette from the toilet (step #3) and dump any residual water and antifreeze that may have accumulated during winterizing. Reinstall back into the toilet again for storage.



11. Open the low point drain valves on the red and blue water lines for 5 seconds and close them. The low point drains are located on the floor of the sink cabinet, below the water heater by-pass valves.
12. Remove the Y hose connection from the exterior drains and reinstall the caps.
13. Turn off the water pump and disconnect the siphon hose. Reattach the original fresh water supply fitting.
14. Pour ¼ cup of non-toxic, RV antifreeze down each drain (kitchen sink and shower drain).
15. Open the low point drain on the white water line and leave it open for storage.



OPTIONAL WINTERIZING FOR Milder CLIMATES

Follow steps above #1-7

7. Open all three low point drain valves in the locations listed in step 9.
8. Connect a blowout valve to the city water inlet. Connect a compressed air source.
9. Open each tap (bathroom, galley, exterior shower, and toilet) both hot and cold. Allow the air to blow the remaining water out of the taps and valves. Fully drain the system. Leave all taps, toilet valve and drain valves in an open position.
10. Pour ½ cup of non-toxic, RV antifreeze down each drain.

WINTER STORAGE ELECTRICAL

1. Turn OFF the inverter by pressing the power directly on the inverter. The inverter is located in the first cabinet on the passenger side behind the fridge.
 2. Fully charge your engine-starting and coach batteries.
 3. Turn OFF the red key charge line disconnect switch, and remove the key.
 4. Turn OFF the battery disconnect switch, below the touchscreen control panel, above the sink.
 5. On the Mercedes-Benz Sprinter chassis, after fully charging the engine-starting battery, you can disconnect the engine starting battery by removing the battery cable from the post next to the accelerator pedal. Open the panel to access this connection.
- It is recommended that you start and run your vehicle for a short period of time each month.
 - It is recommended that the fridge/freezer door be left slightly open to allow air to circulate through the fridge cabinet during a storage period.
 - It is recommended that the vehicle be driven or moved forward or backward, if possible, to avoid flat spotting of the vehicle tires.
 - The lithium batteries should not be charged if the battery thermostat is reading below freezing (32 F or 0 C).
 - If the interior of the coach is below freezing, you must warm the inside up to bring the temperature of the interior batteries above freezing before exercising the generator. Opening the battery box door will help the batteries warm up faster.

See your Mercedes Benz Sprinter manual for additional storage recommendations.



LIVING AREA ELECTRICAL SYSTEMS

The motorhome living area electrical system is designed for convenience. It is capable of supplying the vehicle with at least two sources of power: 12 volt DC power and 110-120 volt AC power.

The 12 volt auxiliary battery supplies power to the interior components (except the roof air conditioner if equipped) for short-term use. The 12 volt or DC, power supplies an AC 110-120 volt current to the interior plug outlets through the 2000 watt true sine wave inverter.

The auxiliary coach battery bank is charged when the chassis engine is running and the red key disconnect switch is in the ON position or when you are connected to a 110-120 volt power source (shore power). Your vehicle may be equipped with solar panels for charging the coach battery bank. These solar panels will charge the auxiliary coach battery if the red key disconnect switch is in the ON position.

For long term use, your vehicle may be powered by plugging into a 110-120 volt external power source with the supplied 25 foot power cable. The 25 foot power cable supplied with your coach must be connected and locked to your coach and then to a 110 - 120 volt power source (a 30 amp power source is recommended). This will supply 110-120 volt power throughout the interior and charge the batteries to power all 12 volt components. Do not run the air conditioner unless you are plugged into a minimum 20 amp power source. A surge protector is also recommended when plugging in your coach.

Your motorhome is equipped with a pure-sine wave 2000 watt Xantrex Freedom XC Inverter Charger. The charging portion of the Freedom XC is set to LFP to charge the lithium ion phosphate batteries. The Freedom XC also converts 110 volt into 12 volt to charge the batteries for the 12 volt appliances when plugged into 110/120 volt power.

The pure-sine wave inverter takes the 12 volt or DC power from your batteries and inverts it up to 110-120 volt AC power. The inverter will enable you to use your 110-120 volt plug outlets when a shore power source or generator source is unavailable. This power source will be limited by the state of charge of your batteries and by the amount of current drawn by each appliance. The inverter has a built-in transfer switch that allows the 110-120 volt shore power to bypass the inverter and power the 110-120 volt plug outlets, when the motorhome is plugged into a shore power source or running on a generator.

110-120 VOLT OR AC EQUIPMENT

Air Conditioner (if equipped)

110 volt Plugs when on a shore power source

110 / 12 volt Power Inverter/Charger

12 VOLT OR DC EQUIPMENT

Inverter

Refrigerator

Interior and exterior coach lights

Toilet

Water pump

Water heater

LP gas & CO detector

Furnace

Fan-Tastic Vent® fans

Power awning

Touchscreen control panel

Solar controller

USB plugs

NOTE: Connect and lock the power cord to your coach first and then the external power source.

NOTE: All dash components including the in-dash radio and front map lights are powered through the Mercedes Sprinter starting (chassis) battery. Prolonged use of these items when the vehicle is not running will deplete the engine starting battery. The engine starting battery is NOT charged through the coach portion of the vehicle or through the solar panel system.

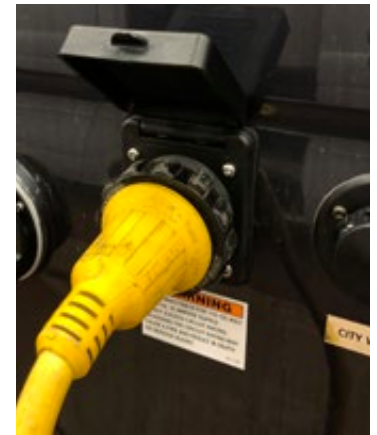
AC 110-120 VOLT POWER

A 25 foot, 30 amp power cord is provided in the rear storage area. To activate all power circuits, connect and lock the power cord to your coach in the driver side utility center and to an adequate 110-120 volt power source. The power cord connections are rated for 30-amp 110-120 volts.

NOTE: *The male end of the power cord is a 30 amp style plug, therefore, you may require an adapter to convert the plug into a 110-15 amp style plug.*

NOTE: *Most RV parks are equipped with 30-amp outlets. Remember to always attach the power cord to your coach first, and then to the power source.*

WARNING: *Ensure the power source for your vehicle is a 110-120 volt power source. A higher voltage or lower voltage outlet could do damage to your coach.*



NOTE: *It is recommended that when hooking up to a shore power source that a surge protector should be used to protect the electrical system of the coach.*

INVERTER/CHARGER

Please refer to the manufacturer's operating instructions for further information.

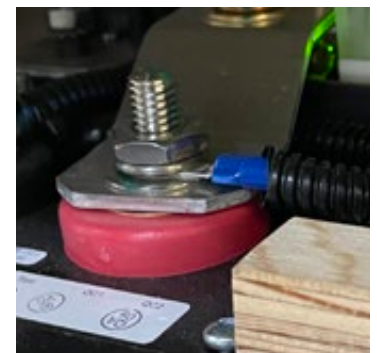
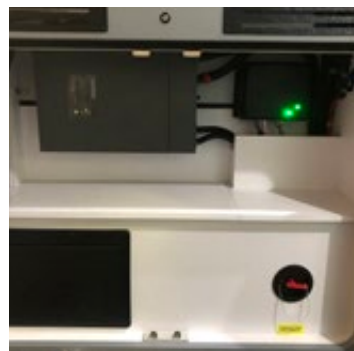
Your vehicle is equipped with the Xantrex Freedom XC 2000 watt Pure-sine wave inverter/charger located in the first cabinet on the passenger side behind the fridge.

The charging portion of the Freedom XC is set to LFP to charge the lithium ion phosphate batteries. The Freedom XC also converts 110 volt into 12 volt to charge the batteries to operate 12 volt appliances when plugged into 110/120 volt power.

The pure-sine wave inverter takes the 12 volt or DC power from your batteries and inverts it up to 110-120 volt AC power. The inverter will enable you to use your 110-120 volt plug outlets when a shore power source is unavailable. This power source will be limited by the state of charge of your batteries and by the amount of current drawn by each appliance. The inverter has a built-in transfer switch that allows the 110-120 volt power to bypass the inverter and power the 110-120 volt plug outlets directly, when the motorhome is plugged into a shore power source.

The inverter will draw .6 amps of DC power if it is turned on and no load is being drawn from the inverter. If no load is on the inverter it will turn itself off after 25 hours of continual operation. The inverter is located in the passenger side front coach cabinet.

The inverter is powered by the large red wire connected through a 250 amp block fuse on top of the DCD above the battery compartment. This 250 amp fuse is in the system to protect the inverter and the coach.



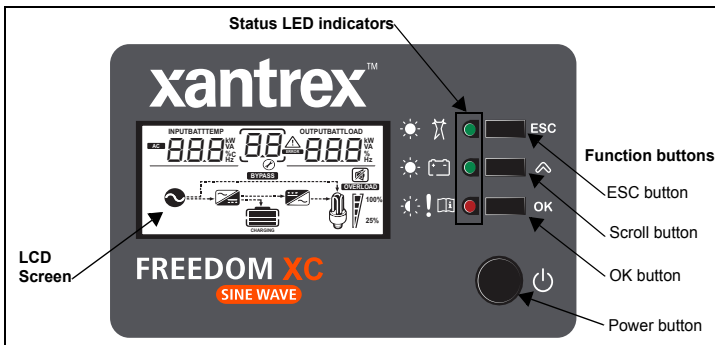
CAUTION: *Ensure all venting for the inverter is kept clear of blockage.*

INVERTER DISPLAY / CONTROL PANEL

This control panel is located on the inverter.



Freedom XC Display Panel



Function Buttons

Button	Definition
	return to default screen or exit setting mode
	next screen or next selection
	to enter the setting mode or to confirm the setting
	turns on inverter/charger operation or to Standby mode

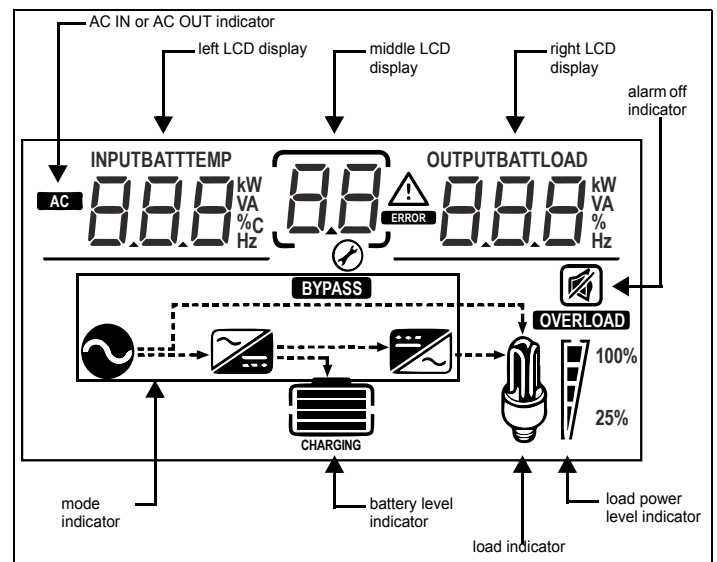
NOTE: To turn the inverter ON or OFF you must press and hold the power button on the inverter control panel for at least 1 second.

NOTE: This control panel will turn the inverter ON or OFF. The 12 volt battery disconnect switch or charge line disconnect switch does not turn the inverter ON or OFF. Always make sure the inverter is in the OFF position when not in use. The inverter can draw .6 amps from your coach batteries if left in the ON position while not in use.

Status LED Indicators

Indicator	Definition
	Indicates grid mode in which shore power is available and passing through to the loads and charging the battery.
	Indicates Battery mode (Inverter mode) in which the inverter is running and supplying power to the loads from the battery.
	Indicates error or fault mode and is accompanied by an error code displayed on the LCD screen. For a list of error codes, see "Warning Messages" on page 64.
	Indicates a Warning condition and is accompanied by an error code and a sounding alarm. For a list of error codes, see "Warning Messages" on page 64.

The LCD Screen changes depending on the operating mode of the inverter.

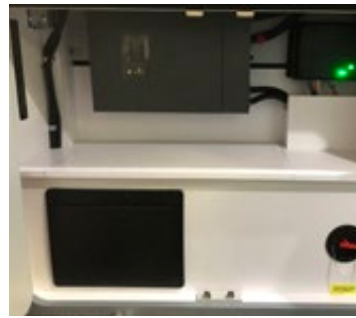


AC ELECTRICAL DISTRIBUTION PANEL

Your motorhome is equipped with an AC distribution panel that houses the breakers for the 110-120 volt system. The distribution panel is located below the inverter. The breakers act like a household breaker; make sure the breaker is shut all the way off before you reset the breaker.

1. 30 Amp Inverter Input
2. 30 Amp Shore Power
3. 20 Amp Air Conditioner (if equipped)
4. 30 Amp Inverter Output
5. 20 Amp Induction Cooktop, Sink (GFCI Protected)
6. 15 Amp All Receptacles (GFCI Protected)
7. 15 Amp Refrigerator

NOTE: Check the GFCI for the individual appliance or plug outlets if the appliance is not operational.

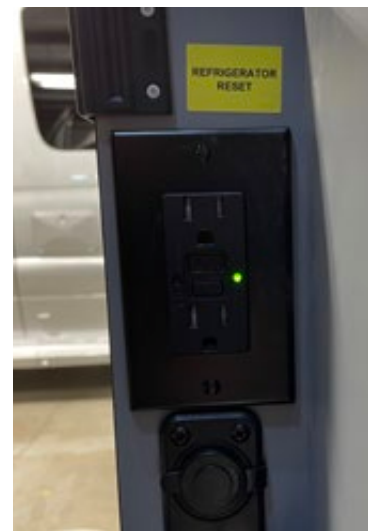


GFCI OUTLETS

The ground fault circuit interrupter (GFCI) 110-volt receptacle provides protection against line-to-ground electrical shock hazards that could be harmful or even fatal.

The outlets for the induction outlet is located on the exterior face of the entry cabinet, this controls the kitchen cabinet plug. The GFCI between the fridge and the rear cabinet controls the exterior receptacle. The fridge receptacle is on the inner face of the entry cabinet. The GFCI receptacles are to be tested at least once a month in accordance with the manufacturer's instructions.

NOTE: The circuits must be powered to test or reset the GFCI. Check the GFCI for the individual appliance or plug outlets if the appliance is not operational.



12 VOLT BATTERY DISCONNECT SWITCH

The 12 volt battery disconnect switch is located by the rear touchscreen control panel, above the galley sink. The disconnect switch will stop all 12 volt power supplied to your motorhome from the coach batteries.

NOTE: If your vehicle is going to be parked and not in use for longer than a 48 hour period, turn this switch to the OFF position as the LP/CO detector is hard wired into the coach batteries and will eventually drain the batteries.



CHARGE LINE DISCONNECT

The charge line disconnect switch (red key) is in the passenger side front cabinet.

The charge line disconnect switch (red key) controls the charge from the engine alternator and solar panels to the coach batteries. When the switch is ON, the coach batteries will charge from the engine alternator and solar panels. When the switch is OFF, the coach batteries will NOT charge from the engine alternator and solar panels. This disconnect switch is used for shipping, storage and freezing conditions. This switch should be OFF during battery servicing.

ON POSITION: red key is locked into the switch

OFF POSITION: red key can be removed from the switch



MASTERVOLT DC-DC CHARGER

The DC-DC charger is located under the top of the passenger side front cabinet.

The DC-DC charger takes 12 volt charge from the alternator and converts it to optimal charging for the coach batteries. The DC-DC charger has a 2 amp trigger fuse located on the left hand side of the 80 amp input breaker.

The charge line breakers (80 amp charger input & 80 amp charger output) are located under the cover panel on top of the battery box next to the charge line disconnect switch.

(for more information see page 33)



DC BREAKERS FOR THE MASTERVOLT DC-DC CHARGER

These are resettable breakers. When a breaker is tripped a lever will swing out below the center bar. To reset the breaker push the lever back up under the center bar. To manually trip a breaker, press the blue button.

The breakers are located in passenger side front cabinet on the rear divider. The input breaker protects the MasterVolt DC-DC charger from a surge coming from the alternator, the output breaker protects the coach systems from a surge coming through the MasterVolt system.



CHASSIS BATTERY

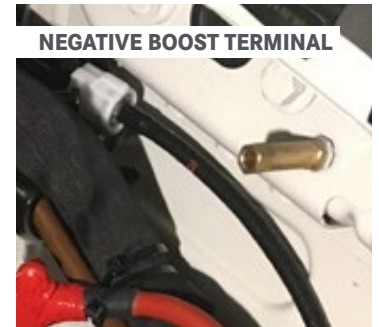
Please refer to the Mercedes-Benz Sprinter manual for maintaining and storing the chassis battery.

The chassis battery is located below the driver's foot board in the cab area of the vehicle. The chassis battery and the coach batteries are separated by the Mercedes-Benz battery control system located under the drivers seat.

NOTE: The chassis battery is only charged through the alternator when the motor is running. The inverter for the coach will not charge the chassis battery.

CHASSIS BATTERY DISCONNECT

This disconnect is located next to the gas pedal in the driver cabin. To disconnect the chassis battery, press the red tab and remove the battery cable from the post.



COACH BATTERIES

ECO-ION EARTH SMART LITHIUM IRON PHOSPHATE (LIFEPO₄) 12 VOLT 100 AH

Your motorhome is equipped with four 100 AH auxiliary coach batteries located in the passenger side rear cabinet. To access the batteries just open the cabinet and remove the plexiglass cover panel.

These Eco-Ion Earth Smart batteries consist of cells using lithium iron phosphate (LiFePO₄) technology. Lithium iron phosphate battery chemistry is one of the safest on the market today.

Lithium batteries are different than lead-acid batteries. A lithium battery's voltage remains relatively constant while discharging, while voltage for a lead-acid battery decreases. A lithium battery can use 100% of its storage capability (measured as Amp-Hour, Ah); while a lead-acid battery typically only uses 50%. Lithium batteries power level will not drop-off, and it will last longer. When the lithium battery runs out of power it does so abruptly.

WARNING: Do not work on the batteries with the vehicle running, generator running or the vehicle plugged into shore power.



Pleasure-Way

ECO-ION

EARTH SMART LITHIUM BATTERY

12.8V100Ah

Model: PW12100LFP
Chemicals: Lithium iron phosphate
Maxshort circuit current: 750A/500µs
IP degree: IP

Type: LiFePO₄ Battery
Working Temperature: -20°C-45°C
Max. Discharge Current: 80A
Max. Charge Current: 80A

Electric shock hazard.
Do not connect in reverse or short circuit.
Do not expose to excessive heat.
Do not disassemble.
Do not impact & crush.

Risque de choc électrique.
Ne vous connectez pas en marche arrière ou en court-circuit.
Ne pas exposer à une chaleur excessive.
Ne pas démonter.
N'avez pas d'impact et écraser.

For warranty or replacement contact Pleasure-Way Inc.

UN38.3 IEC LFP Recycle No Open Flame Caution



BATTERY MANAGEMENT SYSTEM

The Eco-Ion Earth Smart batteries feature a built-in battery management system (BMS). The BMS automatically provides:

- Short circuit protection
- Low voltage protection
- Cell balancing
- Overcharge protection
- Temperature protection



CHARGING

The Freedom XC inverter/charger and the Mastervolt DC-DC charger have been programmed to charge the coach batteries. The GoPower solar panel charging system has been set to Lithium.

Both Eco-Ion lithium batteries are fused with 80 amp fuses for the protection of your coach and the battery system. These fuses are located on top of the battery area and at the charging source.

MASTERVOLT DC-DC CHARGER



Alternator



80 Amp Charger Input Breaker



Mastervolt DC to DC Charger



80 Amp Charger Output Breaker



Charge Line Disconnect (red key)



Battery Shunt Fuse



Coach Batteries

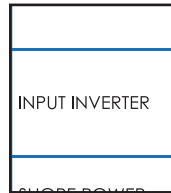
INVERTER DC CHARGING SYSTEM



Shore Power



Distribution Panel Shore Power Breaker



Distribution Panel Input Inverter Breaker



Inverter DC Output

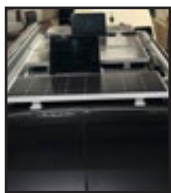


Battery Shunt Fuse



Coach Batteries

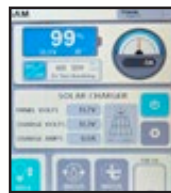
SOLAR PANEL CHARGING SYSTEM



Solar Panel Charging System



10 and 30 Amp Fuse



Touchscreen Control Panel



MPPT Solar Control



30 Amp Fuse



Charge Line Disconnect (red key)



Battery Shunt Fuse



Coach Batteries

WARNING: Do not charge your batteries below 32 degrees F or 0 degrees C. Charging the batteries when below these conditions may cause damage to the lithium cells and shorten the lifespan of the batteries. If you are using your coach in freezing temperatures turn the charge line disconnect switch OFF. This will disconnect the engine alternator and solar panels from charging the coach batteries. The coach batteries will continue to discharge and power your coach as normal in conditions up to -20 C or -4 F.

NOTE: The chassis and coach batteries are separated by the Mercedes-Benz battery system located under the driver's seat. This system will only engage when the vehicle is running in order to charge the coach batteries from the engine alternator.



STORAGE

When placing your vehicle into storage always ensure your coach batteries are fully charged and the 12 volt battery disconnect switch is in the OFF position. To extend the life of your lithium batteries it is recommended that the batteries be fully charged and kept above freezing temperatures when in storage. This may involve removing the lithium batteries from the coach and storing them in temperatures above freezing for winter storage.

WARNING: If the original lithium batteries need to be replaced, they must be replaced with LiFPo lithium batteries. The charging profiles of the coach are designed specifically for this type of lithium battery. Any replacement lithium batteries must have High/Low voltage protection, Short circuit protection, Over current protection and High temperature protection. You must not replace original lithium batteries with Lead Acid, Gel or AGM batteries. Failure to follow this warning can lead to a fire or explosion and result in death or serious injury.


REAL TIME CLOCK FUSE

The three amp real time clock fuse is tied into the DCD on top of the battery box. This fuse is located in the passenger front cabinet, next to the input breaker for the MasterVolt system. This fuse keeps the clock for the touchscreen control system engaged even when the battery switch is in the OFF position. The real time clock draws minimal power from the battery system.

 <p>Caution See user guide before using this battery. Burn hazard. Never charge the battery without charge protection circuitry.</p>	<p>Removal of cover plate by unauthorized personnel will void the warranty!</p>
	<p>For more information please ask your suppliers or distributors.</p> <p>12V100Ah LiFePO4 Battery</p> <p>1. Rating=12.8V,100Ah(5hr) 2. Max. input voltage 14.6V 3. Max. charging current: 100A 4. Cut-off voltage:10V 5. Max. discharging current: 100A 6. Peak discharging current: 350A(8s)</p>
<p>Do Not</p> <ul style="list-style-type: none"> ● Disassemble, crush, puncture, or incinerate ● Short circuit external contacts ● Expose to temperatures above 140 F (60C) ● In series or parallel connections without permit ● Over-discharge the battery 	

WARNING


AS MULTIPLE 12V SOURCES EXIST IN YOUR VEHICLE, ALL 12V SOURCES MUST BE TURNED OFF BEFORE SERVICING COACH BATTERIES. DISCONNECTING COACH BATTERIES MAY NOT DE-ENERGIZE COACH BATTERY. REFER SERVICING TO QUALIFIED TECHNICIANS.



WARNING

THIS 12 VOLT ELECTRICAL SYSTEM HAS BEEN DESIGNED TO USE ECO ION LITHIUM ION BATTERIES ONLY.

DO NOT USE OR REPLACE WITH LEAD ACID, AGM OR GEL BATTERIES. DOING SO WILL CAUSE SEVERE DAMAGE AND VOID THE WARRANTY.



WARNING

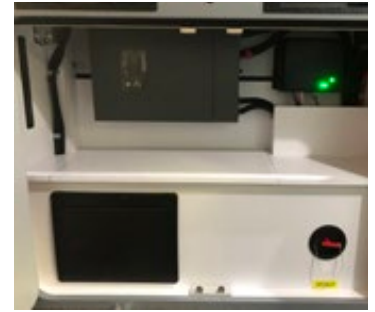
This battery area/compartiment is designed for the use of non-vented batteries only. Do not place a battery that requires venting into this area/compartiment. Vented batteries can release poisonous and flammable gases. Can lead to a fire or explosion and result in death or serious injury.



SOLAR PANEL FUSES

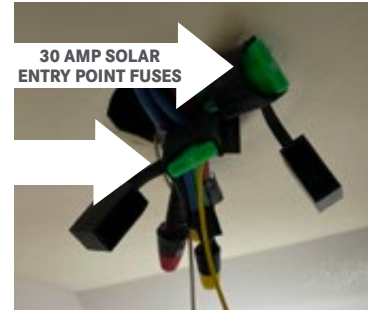
MAIN SOLAR PANEL FUSE (30 AMP)

The main 30 amp fuse for the solar panels is connected to the back of the red key disconnect. To access the back of the disconnect key remove the shelf section directly over top of the disconnect key.



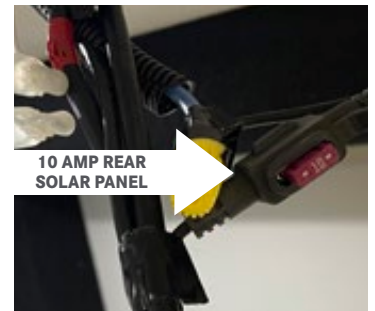
SOLAR ENTRY POINT FUSES (2 X 30AMP)

Solar Entry Point fuses are located above the light in the bathroom. To access the fuses, remove the bathroom light by removing the screws in the frame and pull the wiring out of the opening. You will find two 30 amp fuses at this location.



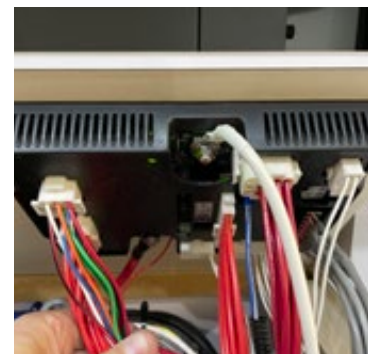
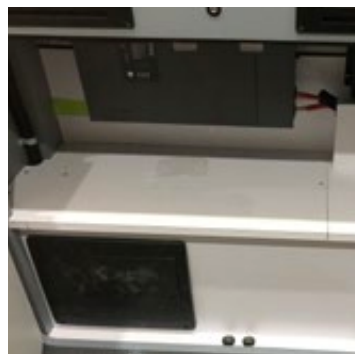
REAR SOLAR PANEL (10 AMP)

There is also a 10 amp fuse for the rear solar panel located under the rear pot light on the driver side. To access this fuse pry out the pot light and pull down the wiring



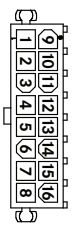
DC LOAD CENTER (G12)

The load center is located under the shelf in the front passenger side cabinet. To access the G12 panel, remove the screws from the shelf and lift it up, it will be attached to the lower side of the shelf. This DC load center controls all the multiplex wiring systems and the touch screen control panels.



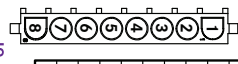
J11 - TANKS

Pins	Description
1	Fresh Tank Sensor Input
9	Tank Sensor GND
Spare	4,5,6,7,8,12,13,14,15,16



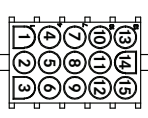
J8 - HC RELAYS (20A MAX) - CURRENT SENSE

Pins	Channels	Description
1	1	(10A) Water Pump
2	2	(20A) Power Outlet Bkr
3	3	(10A) Fridge Bkr
4	4	(10A) Vent Fan #1 (Front) Bkr
5	5	(10A) Vent #2 (Rear) Bkr
6	6	(10A) Furnace Bkr (VarioHeat)
7	7	(8A) Water Heater Bkr (AquaGo)
8	8	(15A) Awning Bkr



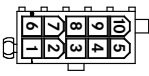
J4 - HC OUTPUTS - CURRENT SENSE

Pins/Channels	IC	Description
5	34 LC	(5A) Reading Light Bkr
6	35 HC	(5A) Toilet Bkr
7	36 LC	(5A) USB #1 Bkr
8	37 LC	(5A) USB #2 Bkr
9	38 LC	(5A) Bathroom Light Bkr
10	39 HC	(5A) COI/P Bkr
Spare		1,2,3,4,11,12,13,14,15



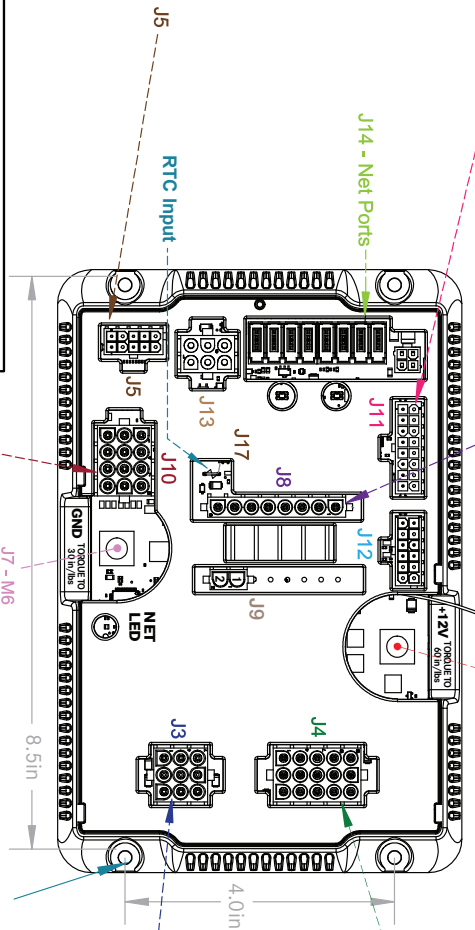
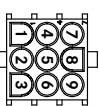
J5 - SW INPUTS

Pins	Description
1	IGN (GND)
6	IGN (+12V)



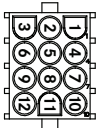
J3

Pins/Channels	IC	Description
1	21 LC	(6A) Living Room Lights
2	22 HC	(6A) Cargo Lights
5	25 LC	(6A) Entry Lights
6	26 LC	(6A) Awning Lights
7	27 HC	(6A) Exterior D/S
8	28 LC	(6A) Exterior P/S
Spare		3,4,9



J10 - LC HALF BRIDGES PROGRAMMABLE
POLARITY 0.5A PER CHANNEL 4A MAX

Pins	Channels	Description
3	11	Fiamma Awning Ext (GND)
4	12	Fiamma Awning Ret (GND)
5	11	Carefree Awning Ext (+12V)
6	12	Carefree Awning Ret (+12V)
Spare		1,2,7,8,9,10,11,12



Torque Specs

Min	Max	Fastener
60 in-lb	70 in-lb	J6 (+12V Stud)
30 in-lb	33 in-lb	J7 (GND Stud)

Operational Specs

Operating Voltage Range	10 V - 14.5 V
Source Voltage Must Not Exceed	+/- 18V
Max Operations Current N.B. External current protection is required, and must not exceed max operational current	50 A
Storage Ambient Temperature Range	-40 - +80 °C
Operating Ambient Temperature Range	-25 - +50 °C

NET LED Status

LED Activity	Status
█ Solid Green	Device is connected to network and communicating properly
█ Off	Device has no power or has completely failed
█ Solid Red	Device has gone offline and is not connected to the network
█ Fast Flashing Green (4 times/sec)	Device is attempting to make initial connection to the network
█ Slow Flashing Green (1 time/sec)	Device was online but has not seen a valid network message for 5 seconds
█ Alternating Red & Orange	Device has gone offline and is attempting to re-connect (within 30 seconds)
█ Alternating Green & Orange	Device is currently online but has gone offline 2 or more times

Version 2.0 (Sept 2021)
PW# 16223

Spyder P/N: BMODZU2T2
Customer P/N: 15500

DCD PANEL

The DCD panel is located above the batteries. To access the DCD remove the black front panel above the batteries by removing the screws in the panel.

The DCD contains the Block Fuses for the G12 panel, the inverter and the MasterVolt system. 250 amp inverter, 40 amp G12, 80 amp Mastervolt. The DCD also contains the DCM3 for battery monitoring.



FIAMMA AWNING

CONTROL CENTER & IGNITION LOCK OUT

Located in the same compartment as the G12 Load Center. The blue Fiamma control allows you to adjust the wind sensitivity of the Fiamma awning. The ignition lock out will disconnect all power to the awning when the ignition is in the run position. This is a safety system that will not allow the awning to extend while the vehicle is running or moving. Always retract your awning before moving your vehicle. Never leave your awning extended when away from your campsite.



WATER HEATER / FURNACE

BRIDGE MODULE FUSE & CP PLUS CONTROL

The bridge module communication box, furnace 2 amp fuse and the CP Plus are located in the small cabinet door next to the sink cabinet. This bridge module allows the water heater and furnace to communicate with the G12 panel and the touch screens. The CP plus control communicates with the water heater and furnace and provides communication to the bridge module. To reset the furnace or water heater and clean the water heater you will have to access the CP plus control panel.



TOUCHSCREEN CONTROL PANEL

The touchscreen control panels are located on the side entrance cabinet facing out toward the door and on the rail above the sink. The touchscreen above the sink also has the red battery switch. The battery disconnect must be on to operate the screens. When you turn on the items in your coach with the touch screen, the chosen item will be lit in blue.

To turn OFF the screen display, select the BACK LIGHT button on the HOME page. To turn the screen display back ON, touch anywhere on the screen.

HOME PAGE

To access the HOME page, select the house icon from the menu off to the right of the touchscreen control panel.

Buttons will display in light blue when activated.

The HOME page will display the following: HOME, LIGHTING, MECHANICAL and SETTINGS.

CLIMATE CONTROL CENTER

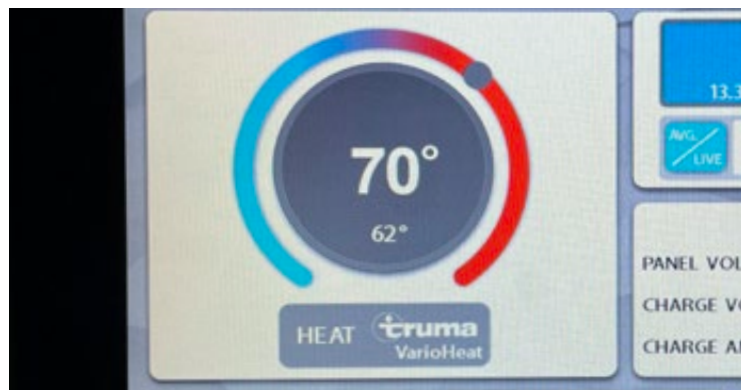
The CLIMATE CONTROL CENTER displays the inside temperature and the desired temperature in the center circle.

FURNACE MODE

To turn ON your Truma VarioHeat furnace, touch the HEAT symbol below the thermostat. Touch the dot on the thermostat and rotate it to the desired temperature. The large number is the SET temperature. The small number gives you the temperature inside the coach.

A/C MODE (IF EQUIPPED)

120 Volt power from a shore line must be present to activate the air conditioner. In the A/C mode if the desired temperature is below the interior temperature the roof top A/C will engage to cool the interior of the coach. The FAN HIGH, FAN LOW and FAN AUTO are used to control the air conditioner fan speed. If the FAN HIGH or FAN LOW is chosen the air conditioner fan will continue to run while the air conditioner compressor will cycle on and off.



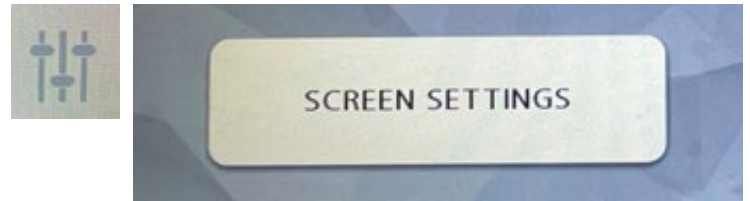
LIGHTING QUICK ACCESS

This area provides a short cut to your 5 most used lights. Go to SETTINGS icon for customization.

1. Select the SCREEN SETTINGS button. This will bring up the DEFAULT BUTTONS section.
2. Use the + and - buttons to adjust lighting options.

Select a light button to turn ON or OFF lighting associated with the area. Buttons will display in light blue when activated. Buttons with UP/DOWN arrows are capable of dimming. Touch and hold the light button for brightening and dimming of the lighting.

See page 41 for more information



WARNING: Ensure the AWNING LIGHT is OFF when the awning is retracted in the stow position.

FRESH WATER

The WATER PUMP section on the HOME screen allows you to turn ON and OFF the on-board WATER PUMP. Ensure there is water in the fresh water holding tank before engaging the water pump. The water pump should not be turned on when the motorhome is connected to city water.

The WATER HEATER must be turned on first in the exterior water heater compartment. It also allows you to monitor the fresh water tank level.

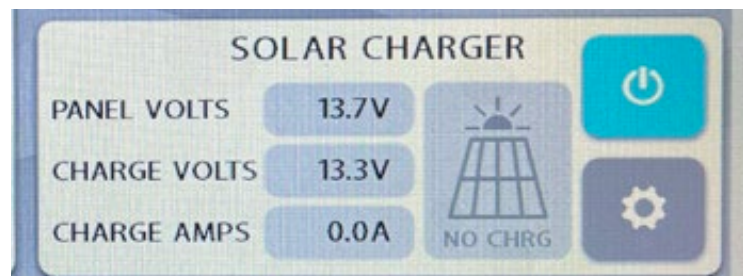
The FRESH WATER tank level indicator; The Rekon is equipped with a 40 gallon fresh water tank located under the raised floor in the rear of the coach.



SOLAR CHARGER

Please refer to the MPPT solar controller manual for more information.

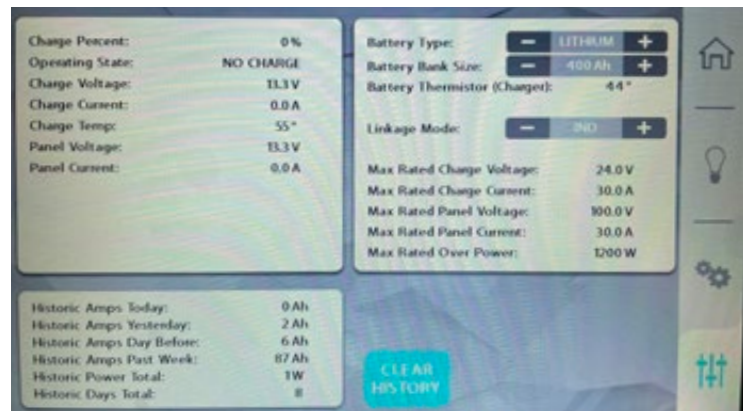
The SOLAR section of the HOME screen allows you to monitor the Go Power GP-RVC-30 MPPT Solar Controllers charge rate. From this screen you can turn ON or OFF the solar panel feed into the solar controller by pressing the POWER symbol. To the left shows the PANEL VOLTAGE before the controller, the CHARGE VOLTAGE at the controller to the batteries and the CHARGE AMPS the solar panels are producing. Towards the middle of the display shows the type of charge that is coming from the panels. It will indicate if the controller is: OFF, BULK, ABSORPTION and FLOAT for the various type of charge.



SOLAR CHARGER SETTINGS

Touch the GEAR symbol to display the settings page for the solar controller. This includes:

- Solar Charging Rate
- History of Charge
- Solar Charge Settings
- Solar Charge Controller Maximum Ratings

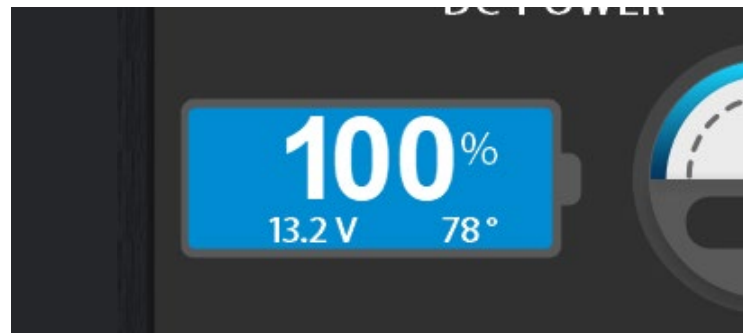


DC POWER / COACH BATTERIES

BATTERY PANEL

Indicates the state-of-charge of the batteries, battery voltage and the temperature of the batteries. The temperature gauge measures the current temperature inside the coach battery box and will help you determine if it's safe to charge your batteries.

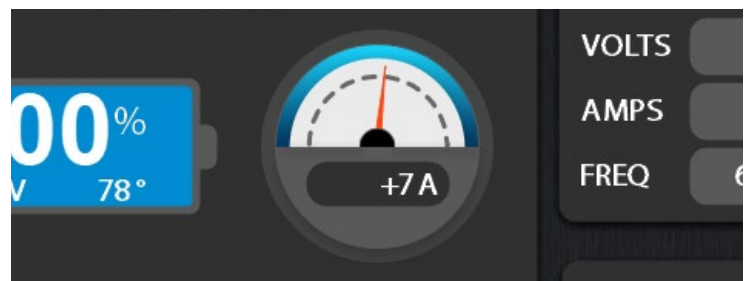
Battery voltage will vary depending on the load. The battery voltage will change depending on the amount of charge the battery is receiving from the solar panel, engine alternator, or the inverter/charger.



NOTE: The temperature of the batteries is important, do not charge the batteries if the temperature is below 32 degrees Fahrenheit or 0 degrees Celsius.

LOSS/GAIN AMPERAGE METER

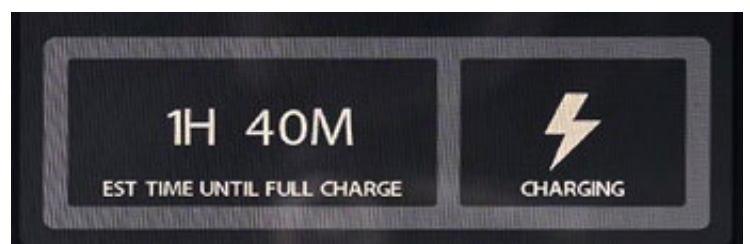
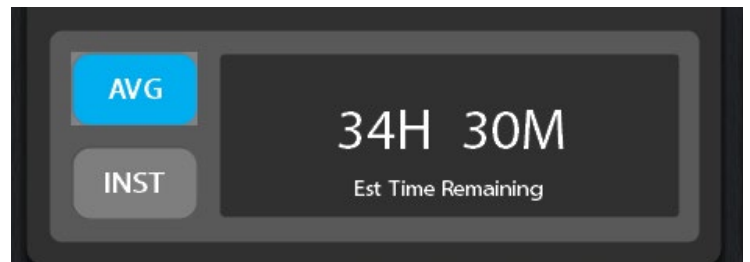
The LOSS/GAIN AMPERAGE METER gives a real time level of DC amperage used in the motorhome. A positive number will indicate that more amperage is going into the battery bank than is being used. A negative number means the battery bank is being drawn down.



ESTIMATION GAUGE

The ESTIMATION GAUGE gives an estimate of time remaining for the DC power that can be drawn from the battery bank. The average rating takes into consideration consumption over a short period of time.

The ESTIMATION GAUGE also estimates the charging time when plugged into shore power, solar charging or when the vehicle is running and the batteries are being charged.



LIGHTING PAGE

Each lighting area has its own button in the LIGHTING page. Select a light button to turn ON or OFF lighting associated with the area. Buttons will display in light blue when activated. Buttons with a sliding bar are capable of dimming. The LIGHT MASTER button turns ON or OFF all the lights inside the vehicle. The LIGHT MASTER button does not control EXTERIOR and AWNING LIGHTS.

To turn OFF the screen display, select the BACK LIGHT button on the HOME page. To turn the screen display back ON, touch anywhere on the screen.

WARNING: Ensure the AWNING LIGHT is OFF when the awning is retracted in the stow position.



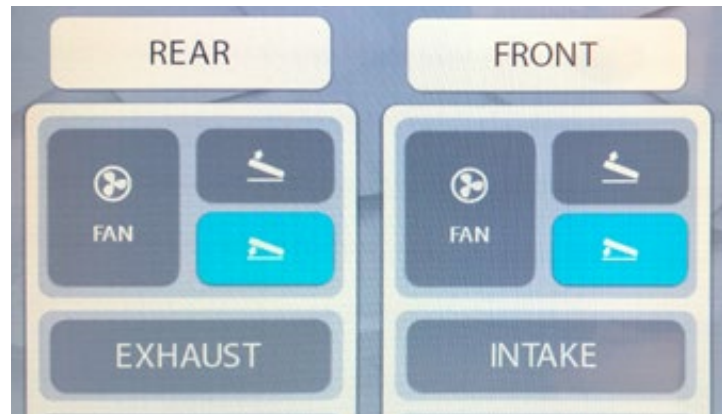
MECHANICAL PAGE

FAN-TASTIC VENT FAN

Select LID UP or LID DOWN button to open or close the vent.

Select the FAN button to start the Fan-Tastic Vent fan. The REAR fan is located above the murphy bed/workstation and is the EXHAUST fan used to draw air out of the coach. The FRONT fan is located in the galley area, and is the INTAKE fan used to draw air in from the outside. They can work together to create a solid airflow.

NOTE: The fan is equipped with a rain sensor so the fan cannot be operated when it is raining. The fan cannot be operated when the fan lid is closed.



AWNING

Ensure the sliding door is CLOSED before operating the awning.

Touch and hold the EXTEND button until the awning is fully extended. Touch and hold the RETRACT button until the awning is completely retracted.

The awning can be operated when the IGNITION OFF light is lit in green. The awning will not operate when the vehicle is running.

WARNING: Always ensure the awning is in the fully retracted position before moving or driving the coach. The awning does not automatically retract when the vehicle is started.

Please see page 8 for more information



SETTINGS PAGE

The settings screen should show the coach model for your vehicle, it should be set to 2022 Rekon. The DIAGNOSTICS button will take you to the diagnostic screens. The SCREEN SETTINGS button will take you to the display setting screen.

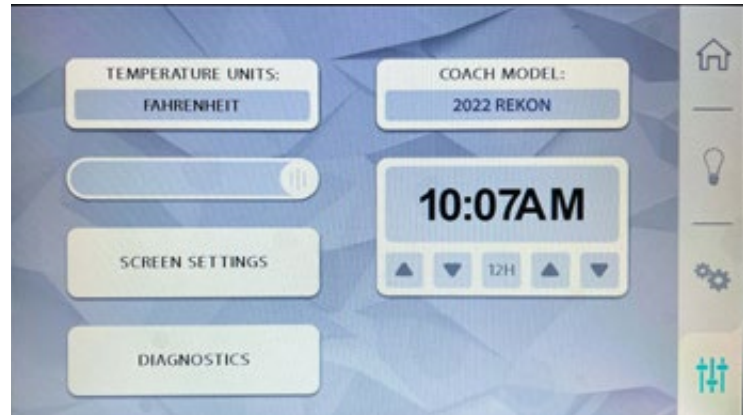


TEMPERATURE UNITS

Select this button to change from FAHRENHEIT to CELSIUS. This will allow you to monitor the interior temperature and set the thermostat according to your chosen measure.

SCREEN BRIGHTNESS

Slide the bar to set the screen to the desired lumens.



SETTING THE CLOCK

Select the left side UP/DOWN arrows to change the hour reading on the display. Select the right side UP/DOWN arrows to change the minutes.

To change from AM to PM you must run the clock through the 12 hour cycle. You can also adjust for a 12hr or a 24hr clock.

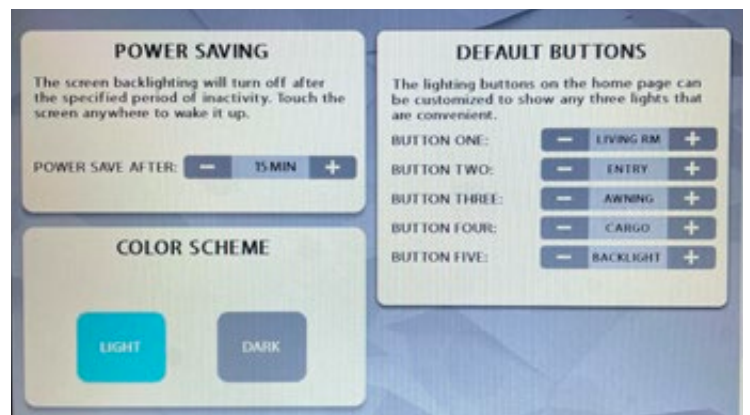
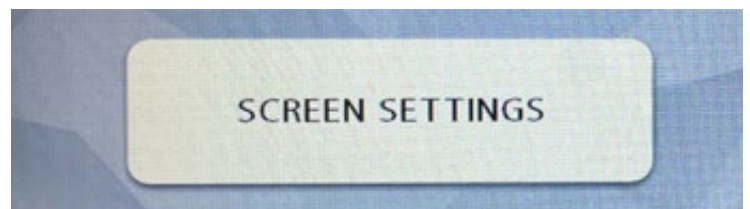
SCREEN SETTINGS

Select the SCREEN SETTINGS button to bring up the POWER SAVING MODE, COLOR SCHEME, the DEFAULT PAGE and the DEFAULT BUTTONS.

The POWER SAVING means with the + or - buttons, you can set the number of MINUTES the screen will be active before it goes off. Once the screen turns OFF, touch anywhere on the screen to turn back ON.

This COLOR SCHEME will allow you to select a LIGHT on dark or a DARK on light color scheme for the display screen.

The DEFAULT BUTTONS section allows you to customize the QUICK ACCESS LIGHTING on the HOME page.



DIAGNOSTICS

The DIAGNOSTICS main page will give you information on the MODULES for all appliance that are online in your coach. The ENTRY and MAIN LCD refer to the 10" display touch panels.

A BLUE light signifies the module is online and working normally. A GREY light would indicate the module is offline and not operational. This screen also gives you the firmware version of each module.

The VENT FAN MODULE located under the vent fan trim ring. This module controls the functions of the vent fan and communicates with the G12 MODULE.

The AC POWER MONITOR MODULE (120 VOLT AC) is connected directly to the AC distribution panel. This module communicates AC POWER output, consumption and frequency to the G12 MODULE.

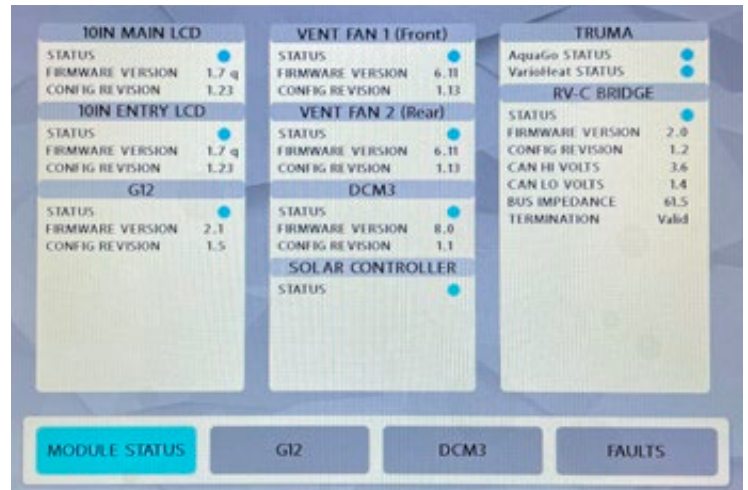
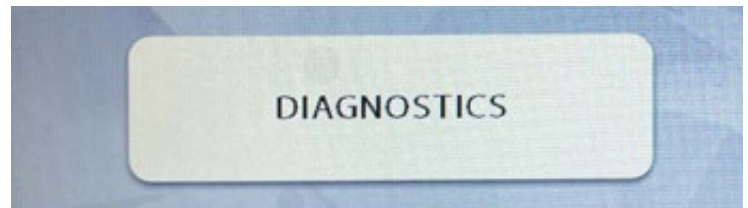
The DCM3 is part of the battery shunt system and is located above the battery box. The DCM3 monitors the battery status and communicates it to the G12 MODULE.

The SOLAR CONTROLLER communicates with the G12 panel the status, type of charge, temperature, panel voltage, charge voltage, amperage and history of the solar charge.

The TRUMA and RV-C BRIDGE work in conjunction with the TRUMA CP PLUS controller and the bridge module to control both the Truma Aquago water heater and the Truma Vario heat furnace.

G12

The G12 refers to the MAIN ELECTRICAL CONTROL BOARD and COMMUNICATION MODULE. All other modules and touchscreen control panels feed into the G12 MODULE. This screen allows you to monitor the 12 volt system in your coach. This display allows you to monitor all 12 volt outputs for the coach. You can also reset your tank monitor if necessary. When a line is ACTIVE the status will be lit in BLUE.



DCM3

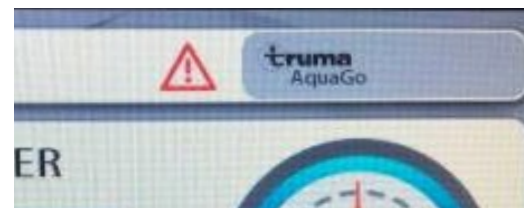
This display allows you to monitor BATTERY HEALTH, BATTERY STATUS, BATTERY TEMPERATURE and CURRENT AMPERAGE DRAW. Max Discharge and Average Discharge is a cumulative number of amps drawn from the battery bank.

This screen will give you an accurate account of what the battery status is, the amount of discharge and the number of cycles that the batteries have had.



FAULTS

The FAULTS display will display a system that is not functioning. A RED triangle will appear next to the TRUMA AQUAGO TEMPERATURE display on the HOME PAGE if there is a fault in the system. This will assist the technician in trouble shooting the system.



MOTORHOME INTERIOR

INTERIOR COCKPIT MAP LIGHT

This is the Mercedes-Benz Sprinter map light system. Please follow the vehicle manufacturer's instructions for operating procedures. This light is powered by the chassis (engine-starting) battery and prolonged use will deplete the engine starting ability.



COOKTOP

Please refer to the manufacturer's operating instructions for further information.

Your vehicle is equipped with a portable single burner flush mount Tru Induction Cooktop located in the drawer below the Truma fridge/freezer. The cook top can be placed on the sink cover for operation and plugged into the plug to the left hand side of the sink. This plug is GFCI controlled by the GFCI on the outside of the entrance cabinet.



FRIDGE/FREEZER

Please refer to the manufacturer's operating instructions for further information.

The Truma C60US fridge unit is a cooler style fridge with a freezer option. The fridge is positioned on the top of the entry cabinet and is secured in place with seatbelt style retaining straps. The fridge can be operated on 12 volt DC or 120 volt AC depending on how you have the fridge connected to electricity. The recommended operation when traveling or when dry camping is on the 12 volt or DC power supply.



HEATED WET BATH / GEAR LOCKER

The heated wet bath / gear locker in the Rekon is a multi-purpose room. The bathroom comes equipped with a cassette toilet, showerhead, shower curtain, two removable shelves, 5 closet rods and a grey water drain.

Lift and remove the shelves to access the rods underneath. Always ensure the rods are in the support positions when the shelves are in place.

The toilet drains into the cassette container that is accessed through the outside door. The shower drains through the grey water system, always ensure the drain hose is connected and the shower is being drained into the portable grey water tanks.

WARNING: *Always ensure the shelves are in the notched position when the vehicle is in motion.*



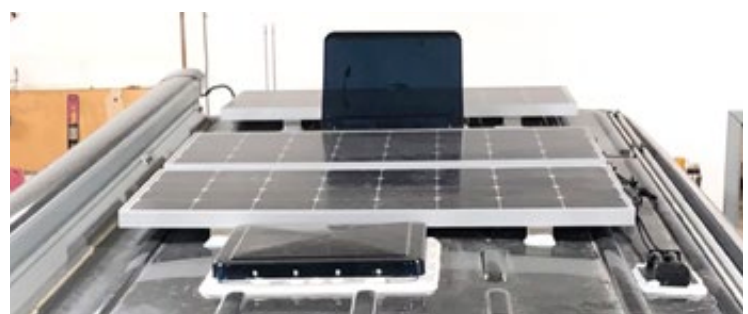
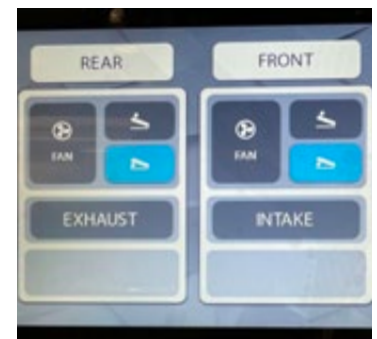
FAN-TASTIC VENT® FAN

Please refer to the manufacturer's operating instructions for further information.

These dual bi-directional Fan-tastic Vent fans will quickly move air in and out of the coach. The two 14" vents are located on the roof-top, one close to the bathroom door that intakes and second above the bed/workstation that exhausts. The EXHAUST fan assists in exhausting odors and steam from the bathroom and cooking area. This fan is an exhaust fan used to draw air out of the coach. The INTAKE fan will bring air from outside into the coach, this helps with general airflow, especially if combined with the EXHAUST FAN. The controls for the fan are located on the 10" touchscreen controls on the MECHANICAL page. To open/close the fan, select the LID UP or LID DOWN button. Select the FAN button to start the fan.

NOTE: *The fan is equipped with a rain sensor so the fan cannot be operated when it is raining. The fan cannot be operated when the fan lid is closed.*

(for more information see page 41)



NOTE: *If your Rekon is equipped with an air conditioner you will only have one vent fan.*

SOLAR PANEL PACKAGE

Please refer to the manufacturer's operating instructions for further information. (for more touchscreen information see page 39, fuse information see page 35)

Your vehicle can be equipped with 400 watt Carmanah solar panel package located on the roof. The GoPower solar panel info is displayed on the touchscreen on the HOME page. The MPPT controller is mounted in the center cabinet on the passenger side. The solar panels will charge the coach batteries even when the 12 volt battery disconnect is in the OFF position. To prevent the solar panels from charging coach batteries you must turn OFF the charge line disconnect (red key).

There are 3 solar panel fuses. They are located:

1. Main 30 amp fuse is connected to the back the red key disconnect
2. Solar Entry Point fuses are located above the light in the bathroom.
3. A 10 amp fuse for rear solar panel is located under rear pot light on the drivers side.

NOTE: *Ensure the solar panels are clean for optimal charging output.*

CAUTION: *To ensure your solar panels are not active when servicing the batteries it is advised to cover the solar panels.*

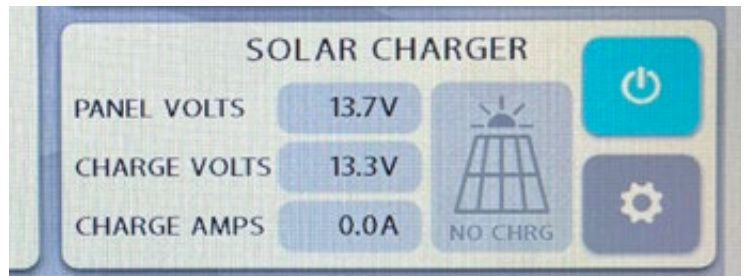
CAUTION: *Turn OFF the charge line disconnect if the vehicle is going to be in storage for a period of time or in sustained freezing conditions without internal heat.*

AIR CONDITIONER (IF EQUIPPED)

Please refer to the manufacturer's operating instructions for further information.

Your vehicle may be equipped with the 11,000 BTU low profile Dometic air conditioner. From the ground to the top of the air conditioner it measures 9' 11". This is the highest point on your vehicle. Ensure you allow for this clearance when proceeding under overhead items. The controls for the air conditioner are located on the HOME page of the touch screen control panels. Choose A/C on the touch screen control panel, set the chosen temperature and the fan speed for your comfort. If you wish for the A/C to cycle on and off choose auto for the fan speed. By choosing fan low or high the fan will continue to run and will not cycle on and off.

NOTE: *When running the A/C in high heat or high humidity it is recommended the fan speed be set to HIGH and open all vents on inside ceiling assembly. This will help avoid condenser freeze up.*



USB CHARGING PORT

Your motorhome is equipped with USB charging ports. Each charging port features 2 USB slots that will fit a USB type A connector. The 12 volt battery disconnect switch must be ON to power the USB ports. The USB ports are protected by the DC Load Center G12 module.



FRONT CAB PRIVACY SHADES

Fully form fitting to your windshield and cab doors, these shades provide total privacy up front when needed.

1. Driver and passenger shades are magnetic.
2. Windshield shade is held in place with the visors.



TABLE

The Lagun Table leg system is constructed of heavy anodized aluminum, and swivels around in the front seating area.

1. Remove the table and table leg from behind the driver seat.
2. Remove the table leg from the base of the table by loosening off the black locking handle.
3. Slide the leg into the leg support located on the passenger side ottoman and tighten the locking handle.
4. Press the table down onto the leg and tighten the locking handle.
5. You can now adjust the table to the desired height and location, ensure the locking handles are locked in place while the table is in use.
6. This location will allow you to swivel your front seats and have a dining or work area.

WARNING: Ensure Lagun table latched in the storage position before driving.



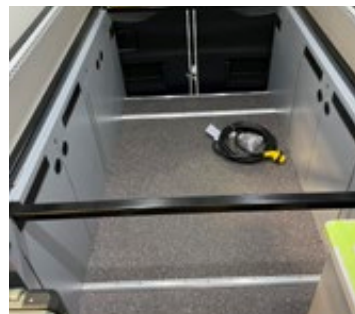
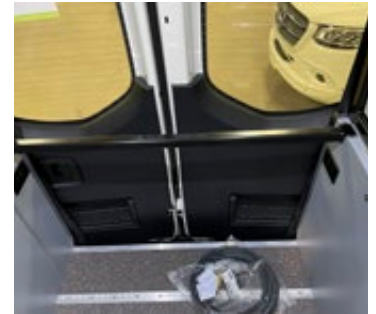
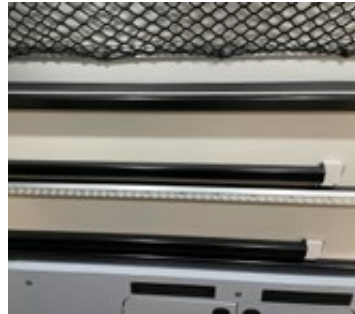
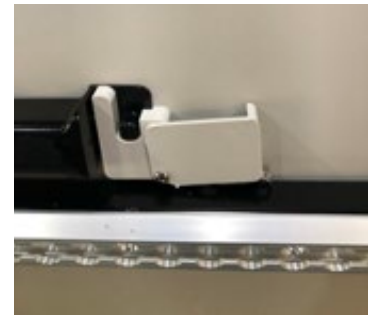
MURPHY BED LAYOUT

The bed support cross members are located on the bottom of the passenger side Murphy bed.

1. Lift the lock on the front retainer lid for the bed cross members holder and rotate the lid out of the way.
2. Lift the cross member out of the front retainer and slide the cross member out of the rear support.
3. Place both the front and rear cross members into the retaining holes, post down at the front and rear of the passenger and driver side cabinets.
4. Release the yellow safety strap from the driver and passenger side Murphy beds and fold them down.
5. Fold the side cushions in half and place them on top of the cabinet to provide a flat- bed surface. The side cushions must be stood unfolded when the bed is stowed.

WARNING: *Never lower the Murphy beds without the cross members in place.*

WARNING: *Always ensure the yellow safety strap is latched to the side rail when the Murphy beds are in the stow position.*



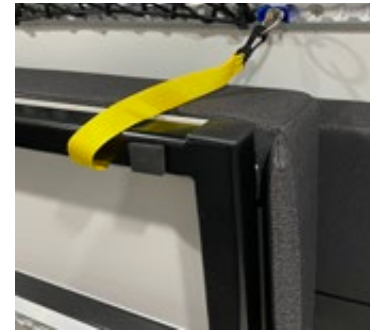
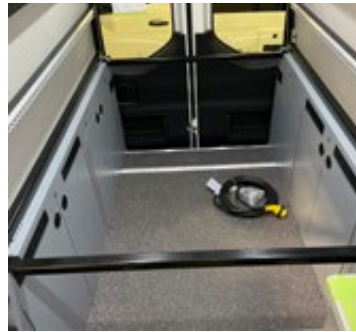
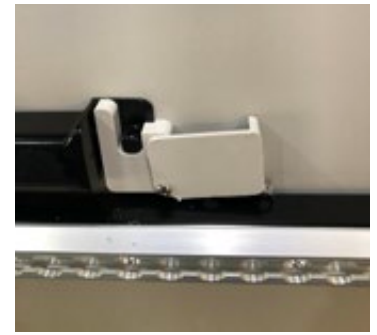
REAR WORK STATION

1. Lift the lock on the front retainer lid for the bed cross members holder and rotate the lid out of the way.
2. Lift the cross member out of the front retainer and slide the cross member out of the rear support.
3. Place both the front and rear cross members into the retaining holes, post down at the front and rear of the passenger and driver side cabinets.
4. Lower the driver or passenger side bed.
5. Remove the cushion from the bed. (This cushion has Velcro on the bottom to hold it in place)
6. Adjust the locking catches with the support loop on the upper side rail. The front locking catch should be in line with the front edge of the bed, the rear locking catch should be at the rear most position.
7. Attach the shorter cable (green tape) to the front tabletop support loop and the front side rail support loop. Lift the work station and remove the front cross member and stow it in the retainer. Allow the table to rest on the front cable.
8. Attach the longer cable to the rear table top support and to the rear rail support loop. Lift the work station and remove the rear cross member and stow it in the retainer.
9. Allow the work station to rest on the front and rear cables.

NOTE: This work station will have a weight limit of 40 lbs.

NOTE: Do not sit, sleep or pound on this work station without the front and rear cross members in place.

NOTE: Ensure the blue locking clip is secured and locked on the rail.



JACK AND JACK TOOLS

The jack and jack tools are located on the passenger floor area of the Sprinter cab, and in the lower right compartment under the passenger seat.

The jack and jack tools are provided by Mercedes-Benz. Please refer to the Mercedes-Benz owner's manual for jacking locations.

NOTE: *The Spare tire is located under the vehicle between the hitch rails. For instructions, see your Mercedes Benz Sprinter manual.*

NOTE: *For your convenience a flat repair kit that includes a tire repair liquid and an air compressor has been provided under the rear sofa (rear doors).*



TIRE SAFETY



The following information has been acquired from the NHTSA website.

EVERYTHING RIDES ON IT

Studies of tire safety show that maintaining proper tire pressure, observing tire and vehicle load limits (not carrying more weight in your vehicle than your tires or vehicle can safely handle), avoiding road hazards, and inspecting tires for cuts, slashes, and other irregularities are the most important things you can do to avoid tire failure, such as tread separation or blowout and flat tires. These actions, along with other care and maintenance activities, can also:

- Improve vehicle handling
- Help protect you and others from avoidable breakdowns and accidents
- Improve fuel economy
- Increase the life of your tires.

This booklet presents a comprehensive overview of tire safety, including information on the following topics:

- Basic tire maintenance
- Uniform Tire Quality Grading System
- Fundamental characteristics of tires
- Tire safety tips.

Use this information to make tire safety a regular part of your vehicle maintenance routine. Recognize that the time you spend is minimal compared with the inconvenience and safety consequences of a flat tire or other tire failure.

SAFETY FIRST—BASIC TIRE MAINTENANCE

Properly maintained tires improve the steering, stopping, traction, and load-carrying capability of your vehicle. Under-inflated tires and overloaded vehicles are a major cause of tire failure.

Therefore, as mentioned above, to avoid flat tires and other types of tire failure, you should maintain proper tire pressure, observe tire and vehicle load limits, avoid road hazards, and regularly inspect your tires.

FINDING YOUR VEHICLE'S RECOMMENDED TIRE PRESSURE AND LOAD LIMITS

Tire information placards and vehicle certification labels contain information on tires and load limits. These labels indicate the vehicle manufacturer's information including:

- Recommended tire size
- Recommended tire inflation pressure
- Vehicle capacity weight (VCW—the maximum occupant and cargo weight a vehicle is designed to carry)
- Front and rear gross axle weight ratings (GAWR— the maximum weight the axle systems are designed to carry).

Both placards and certification labels are permanently attached to the vehicle door edge, door post, glove-box door, or inside of the trunk lid. You can also find the recommended tire pressure and load limit for your vehicle in the vehicle owner's manual.

UNDERSTANDING TIRE PRESSURE AND LOAD LIMITS

Tire inflation pressure is the level of air in the tire that provides it with load-carrying capacity and affects the overall performance of the vehicle. The tire inflation pressure is a number that indicates the amount of air pressure— measured in pounds per square inch (psi)—a tire requires to be properly inflated. (You will also find this number on the vehicle information placard expressed in kilopascals (kPa), which is the metric measure used internationally.)

Manufacturers of passenger vehicles and light trucks determine this number based on the vehicle's design load limit, that is, the greatest amount of weight a vehicle can safely carry and the vehicle's tire size. The proper tire pressure for your vehicle is referred to as the "recommended cold inflation pressure." (As you will read below, it is difficult to obtain the recommended tire pressure if your tires are not cold.)

Because tires are designed to be used on more than one type of vehicle, tire manufacturers list the "maximum permissible inflation pressure" on the tire sidewall. This number is the greatest amount of air pressure that should ever be put in the tire under normal driving conditions.

CHECKING TIRE PRESSURE

It is important to check your vehicle's tire pressure at least once a month for the following reasons:

- Most tires may naturally lose air over time.
- Tires can lose air suddenly if you drive over a pothole or other object or if you strike the curb when parking.
- With radial tires, it is usually not possible to determine under-inflation by visual inspection.

For convenience, purchase a tire pressure gauge to keep in your vehicle. Gauges can be purchased at tire dealerships, auto supply stores, and other retail outlets.

The recommended tire inflation pressure that vehicle manufacturers provide reflects the proper psi when a tire is cold. The term cold does not relate to the outside temperature. Rather, a cold tire is one that has not been driven on for at least three hours. When you drive, your tires get warmer, causing the air pressure within them to increase. Therefore, to get an accurate tire pressure reading, you must measure tire pressure when the tires are cold or compensate for the extra pressure in warm tires.

STEPS FOR MAINTAINING PROPER TIRE PRESSURE

1. Locate the recommended tire pressure on the vehicle's tire information placard, certification label, or in the owner's manual.
2. Record the tire pressure of all tires.
3. If the tire pressure is too high in any of the tires, slowly release air by gently pressing on the tire valve stem with the edge of your tire gauge until you get to the correct pressure

4. If the tire pressure is too low, note the difference between the measured tire pressure and the correct tire pressure. These "missing" pounds of pressure are what you will need to add.
5. At a service station, add the missing pounds of air pressure to each tire that is underinflated.
6. Check all the tires to make sure they have the same air pressure (except in cases in which the front and rear tires are supposed to have different amounts of pressure).

If you have been driving your vehicle and think that a tire is under-inflated, fill it to the recommended cold inflation pressure indicated on your vehicle's tire information placard or certification label. While your tire may still be slightly under-inflated due to the extra pounds of pressure in the warm tire, it is safer to drive with air pressure that is slightly lower than the vehicle manufacturer's recommended cold inflation pressure than to drive with a significantly under-inflated tire. Since this is a temporary fix, don't forget to recheck and adjust the tire's pressure when you can obtain a cold reading.

TIRE SIZE

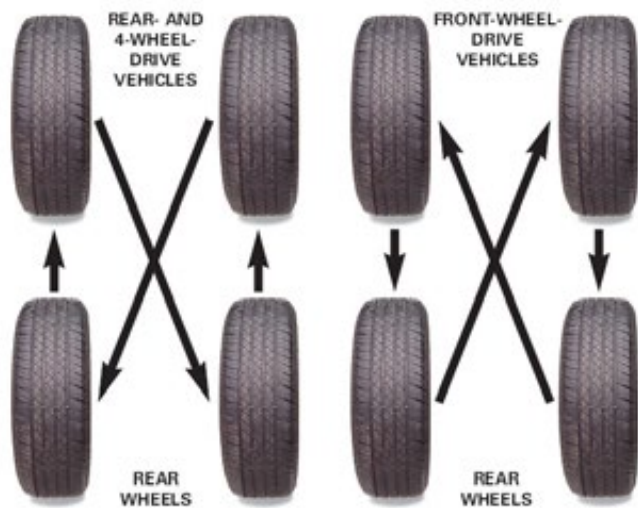
To maintain tire safety, purchase new tires that are the same size as the vehicle's original tires or another size recommended by the manufacturer. Look at the tire information placard, the owner's manual, or the sidewall of the tire you are replacing to find this information. If you have any doubt about the correct size to choose, consult with the tire dealer.

TIRE TREAD

The tire tread provides the gripping action and traction that prevent your vehicle from slipping or sliding, especially when the road is wet or icy. In general, tires are not safe and should be replaced when the tread is worn down to 1/16 of an inch. Tires have built-in tread wear indicators that let you know when it is time to replace your tires. These indicators are raised sections spaced intermittently in the bottom of the tread grooves. When they appear "even" with the outside of the tread, it is time to replace your tires. Another method for checking tread depth is to place a penny in the tread with Lincoln's head upside down and facing you. If you can see the top of Lincoln's head, you are ready for new tires.

TIRE BALANCE AND WHEEL ALIGNMENT

To avoid vibration or shaking of the vehicle when a tire rotates, the tire must be properly balanced. This balance is achieved by positioning weights on the wheel to counterbalance heavy spots on the wheel-and-tire assembly. A wheel alignment adjusts the angles of the wheels so that they are positioned correctly relative to the vehicle's frame. This adjustment maximizes the life of your tires and prevents your car from veering to the right or left when driving on a straight, level road. These adjustments require special equipment and should be performed by a qualified technician.



A TIRE ROTATION EXAMPLE

For maximum mileage, rotate your tires every 5,000 miles. Follow correct rotation patterns.

TIRE ROTATION

Rotating tires from front to back and from side to side can reduce irregular wear (for vehicles that have tires that are all the same size). Look in your owner's manual for information on how frequently the tires on your vehicle should be rotated and the best pattern for rotation.

TIRE REPAIR

The proper repair of a punctured tire requires a plug for the hole and a patch for the area inside the tire that surrounds the puncture hole. Punctures through the tread can be repaired if they are not too large, but punctures to the sidewall should not be repaired. Tires must be removed from the rim to be properly inspected before being plugged and patched.

TIRE FUNDAMENTALS

Federal law requires tire manufacturers to place standardized information on the sidewall of all tires. This information identifies and describes the fundamental characteristics of the tire and also provides a tire identification number for safety standard certification and in case of a recall.

UNIFORM TIRE QUALITY GRADING SYSTEM (UTQGS)

To help consumers compare a passenger car tire's treadwear rate, traction performance, and temperature resistance, the federal government requires tire manufacturers to grade tires in these three areas. This grading system, known as the Uniform Tire Quality Grading System, provides guidelines for making relative comparisons when purchasing new tires. You also can use this information to inquire about the quality of tires placed on new vehicles.

Although this rating system is very helpful when buying new tires, it is not a safety rating or guarantee of how well a tire will perform or how long it will last. Other factors such as personal driving style, type of car, quality of the roads, and tire maintenance habits have a significant influence on your tire's performance and longevity.

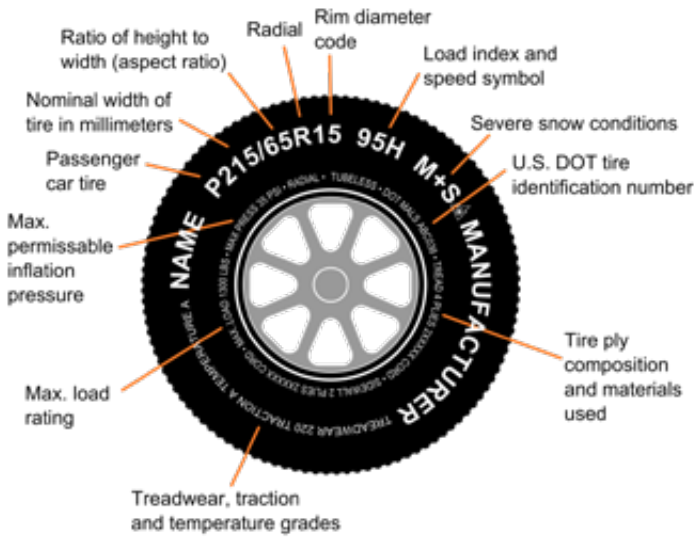
Treadwear grades are an indication of a tire's relative wear rate. The higher the treadwear number is, the longer it should take for the tread to wear down. For example, a tire grade of 400 should wear twice as long as a tire grade of 200.

Traction grades are an indication of a tire's ability to stop on wet pavement. A higher graded tire should allow you to stop your car on wet roads in a shorter distance than a tire with a lower grade. Traction is graded from highest to lowest as "AA", "A", "B", and "C".

Temperature grades are an indication of a tire's resistance to heat. Sustained high temperature (for example, driving long distances in hot weather), can cause a tire to deteriorate, leading to blowouts and tread separation. From highest to lowest, a tire's resistance to heat is graded as "A", "B", or "C".

INFORMATION ON PASSENGER VEHICLE TIRES

Please refer to the diagram below.



P

The “P” indicates the tire is for passenger vehicles.

NEXT NUMBER

This three-digit number gives the width in millimeters of the tire from sidewall edge to sidewall edge. In general, the larger the number, the wider the tire.

NEXT NUMBER

This two-digit number, known as the aspect ratio, gives the tire’s ratio of height to width. Numbers of 70 or lower indicate a short sidewall for improved steering response and better overall handling on dry pavement.

R

The “R” stands for radial. Radial ply construction of tires has been the industry standard for the past 20 years.

NEXT NUMBER

This two-digit number is the wheel or rim diameter in inches. If you change your wheel size, you will have to purchase new tires to match the new wheel diameter.

NEXT NUMBER

This two- or three-digit number is the tire’s load index. It is a measurement of how much weight each tire can support. You may find this information in your owner’s manual. If not, contact a local tire dealer. Note: You may not find this information on all tires because it is not required by law.

M+S

The “M+S” or “M/S” indicates that the tire has some mud and snow capability. Most radial tires have these markings; hence, they have some mud and snow capability.

SPEED RATING

The speed rating denotes the speed at which a tire is designed to be driven for extended periods of time. The ratings range from 99 miles per hour (mph) to 186 mph. These ratings are listed below. Note: You may not find this information on all tires because it is not required by law.

Letter Rating	Speed Rating
Q	99 MPH
R	106 MPH
S	112 MPH
T	118 MPH
U	124 MPH
H	130 MPH
V	149 MPH
W	168 MPH
Y	186 MPH

For tires with a maximum speed capability over 149 mph, tire manufacturers sometimes use the letters ZR. For those with a maximum speed capability over 186 mph, tire manufacturers always use the letters ZR.

U.S. DOT TIRE IDENTIFICATION NUMBER

This begins with the letters “DOT” and indicates that the tire meets all federal standards. The next two numbers or letters are the plant code where it was manufactured, and the last four numbers represent the week and year the tire was built. For example, the numbers 3197 means the 31st week of 1997. The other numbers are marketing codes used at the manufacturer’s discretion. This information is used to contact consumers if a tire defect requires a recall.

TIRE PLY COMPOSITION AND MATERIALS USED

The number of plies indicates the number of layers of rubber-coated fabric in the tire. In general, the greater the number of plies, the more weight a tire can support. Tire manufacturers also must indicate the materials in the tire, which include steel, nylon, polyester, and others.

MAXIMUM LOAD RATING

This number indicates the maximum load in kilograms and pounds that can be carried by the tire.

MAXIMUM PERMISSIBLE INFLATION PRESSURE

This number is the greatest amount of air pressure that should ever be put in the tire under normal driving conditions.

UTQGS INFORMATION

TREADWEAR NUMBER

This number indicates the tire's wear rate. The higher the treadwear number is, the longer it should take for the tread to wear down. For example, a tire graded 400 should last twice as long as a tire graded 200.

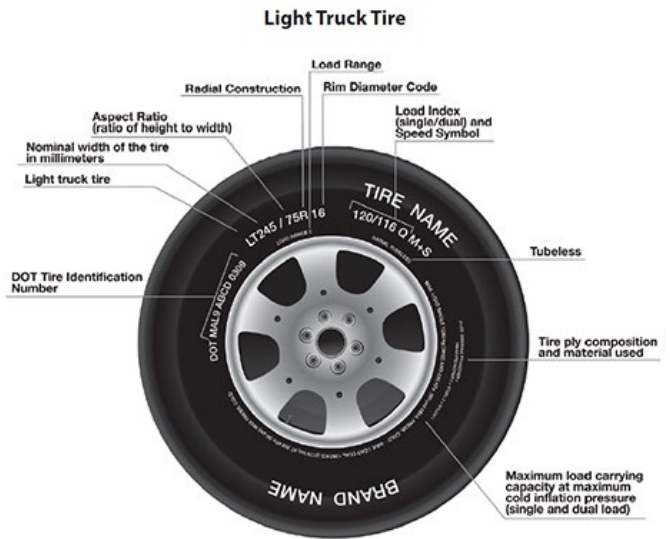
TRACTION LETTER

This letter indicates a tire's ability to stop on wet pavement. A higher graded tire should allow you to stop your car on wet roads in a shorter distance than a tire with a lower grade. Traction is graded from highest to lowest as "AA", "A", "B", and "C".

TEMPERATURE LETTER

This letter indicates a tire's resistance to heat. The temperature grade is for a tire that is inflated properly and not overloaded. Excessive speed, underinflation or excessive loading, either separately or in combination, can cause heat build-up and possible tire failure. From highest to lowest, a tire's resistance to heat is graded as "A", "B", or "C".

ADDITIONAL INFORMATION ON LIGHT TRUCK TIRES



Tires for light trucks have other markings besides those found on the sidewalls of passenger tires.

LT

The "LT" indicates the tire is for light trucks.

MAX. LOAD DUAL KG(LBS) AT KPA(PSI) COLD

This information indicates the maximum load and tire pressure when the tire is used as a dual, that is, when four tires are put on each rear axle (a total of six or more tires on the vehicle).

MAX. LOAD SINGLE KG(LBS) AT KPA(PSI) COLD

This information indicates the maximum load and tire pressure when the tire is used as a single.

LOAD RANGE

This information identifies the tire's load-carrying capabilities and its inflation limits.

SNOW TIRES

In some heavy snow areas, local governments may require true snow tires, those with very deeply cut tread. These tires should only be used in pairs or placed on all four wheels. Make sure you purchase snow tires that are the same size and construction type as the other tires on your vehicle.

REPORTING SAFETY DEFECTS

If you believe that your vehicle has a defect which could cause a crash or could cause you injury or death, you should contact Pleasure-Way immediately.

PLEASURE-WAY CONTACT INFORMATION

To contact Pleasure-Way, you may call us toll-free at 1-800-364-0189; go to www.pleasureway.com; or write to:

Pleasure-Way Industries Ltd.
302 Portage Avenue
Saskatoon SK, Canada S7J 4C6

Please refer to the vehicle/chassis owners' manual for more information on your chassis manufacturer.

Please contact them if you feel that there is a chassis safety issue.

If your problem is not resolved to your satisfaction, please contact either NHTSA (U.S.) or Transport Canada (CA):

NHTSA (U.S. ONLY)

The following text is published as required of manufacturers under Title 49, Code of U.S. Federal Regulations, Part 575 pursuant to the "National Traffic and Motor Vehicle Safety Act of 1966"

If you believe that your vehicle has a defect which could cause a crash or could cause you injury or death, you should immediately inform the National Highway Traffic Safety Administration (NHTSA) in addition to notifying Pleasure-Way.

If NHTSA receives similar complaints, it may open an investigation, and if it finds that a safety defect exists in a group of vehicles, it may order a recall and remedy campaign. However, NHTSA cannot become involved in individual problems between you, your dealer or Pleasure-Way.

NHTSA CONTACT INFORMATION

To contact NHTSA, you may call the Vehicle Safety Hotline toll-free at 1-888-327-4236 (TTY: 1-800-424-9153); go to www.safercar.gov; or write to:

Administrator
1200 New Jersey Avenue SE
Washington, D.C. 20590

You can also obtain other information about motor vehicle safety from www.safercar.gov.

TRANSPORT CANADA (CANADA ONLY)

If you believe that your vehicle has a defect which could cause a crash or could cause injury or death, you should immediately inform Transport Canada in addition to notifying Pleasure-Way.

TRANSPORT CANADA CONTACT INFORMATION

Website: <https://tc.canada.ca/en/road-transportation/defects-recalls-vehicles-tires-child-car-seats/report-potential-safety-defect-vehicles-tires-child-car-seats>
(English)

Website: <https://tc.canada.ca/fr/transport-routier/default-rappels-vehicules-pneus-sieges-auto-enfant/signaler-defaut-potentiel-lie-securite-vehicules-pneus-sieges-auto-enfant>
(French)

Phone: 1-800-333-0510

302 PORTAGE AVENUE
SASKATOON SK, CANADA S7J 4C6
TEL: 800.364.0189 FAX: 306.934.7085

WWW.PLEASUREWAY.COM