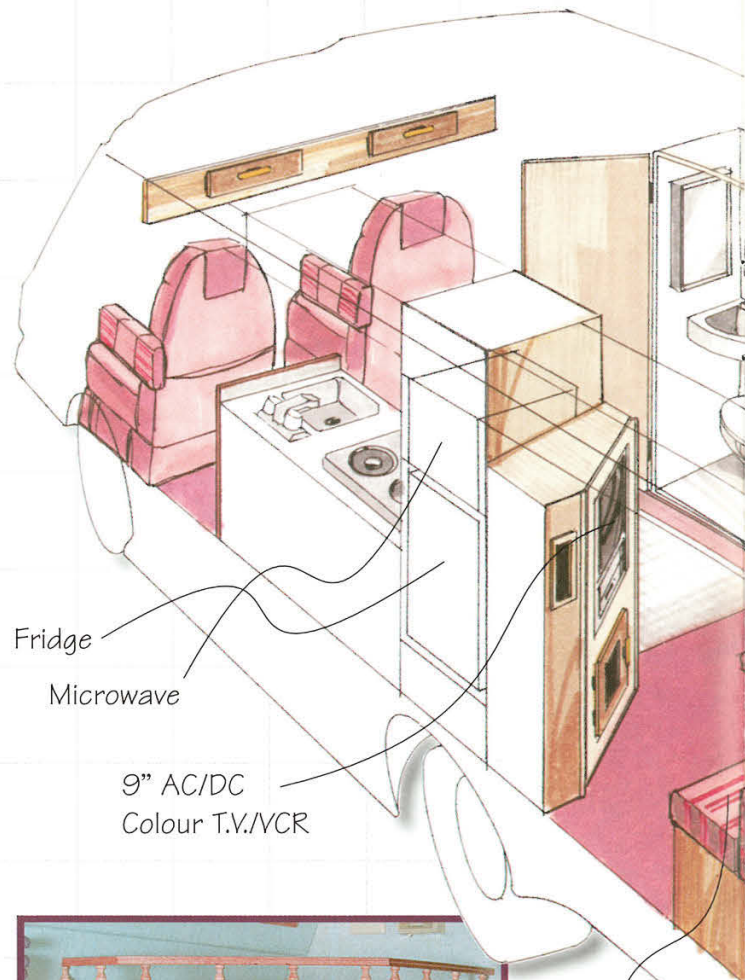


Pleasure-Way



SRL



PLEASURE-WAY INDUSTRIES is totally committed to the continual evolution of the Van Motorhome. This is what inspired them in 1990 to design their **REAR LIVINGROOM** model. This contemporary layout had never been offered in a **PLEASURE-WAY** Van Motorhome. An L-shaped sofa replaces the classic rear dinette, providing you with a more open spacious area to relax in. The L-shaped sofa easily converts into a 73" X 50" double bed. With your safety in mind, **PLEASURE-WAY** has created the option of carrying extra passengers in their Van Motorhomes by installing two seat belts in the L-shaped Sofa, which is perfect for those one day outings or when utilizing as a second vehicle.

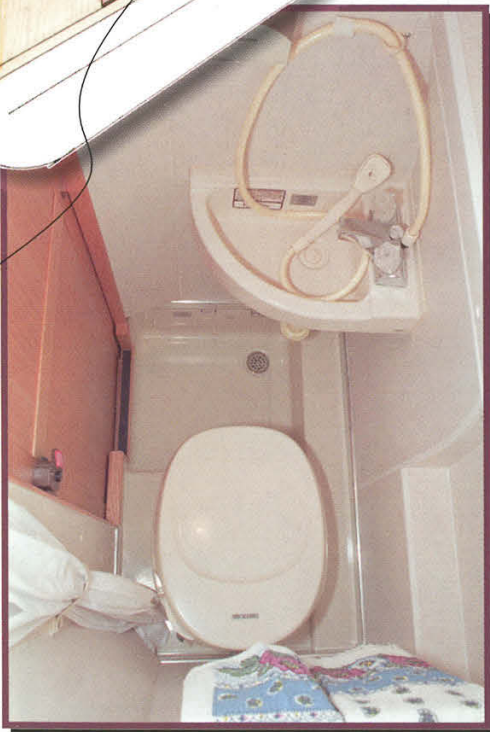
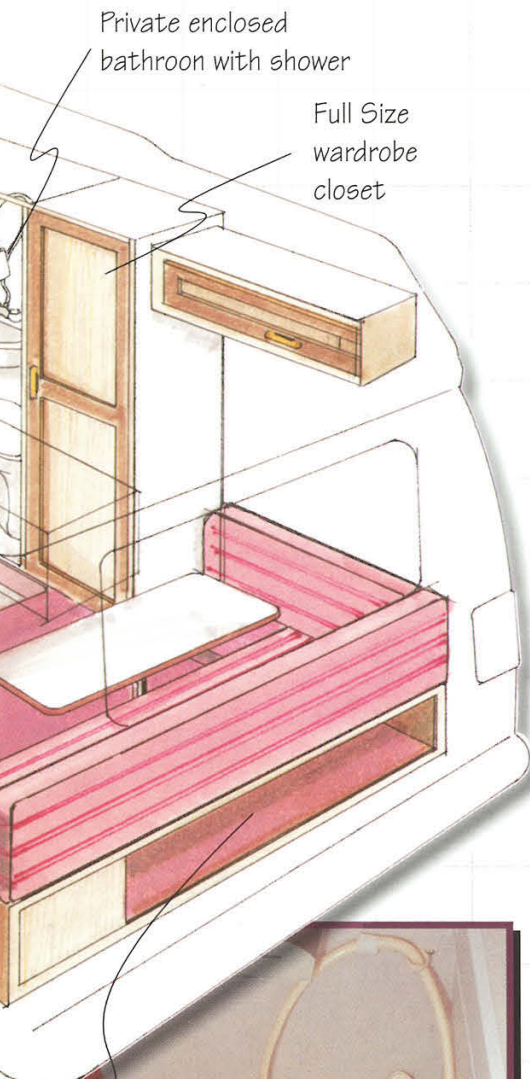
What livingroom would be complete without an Entertainment Center?

PLEASURE-WAY responded and the built-in Entertainment Center was introduced, which features a 9" Emerson AC/DC T.V./VCR, making the **REAR LIVINGROOM** complete. This built-in Entertainment Center enhances all the comforts of home which adds to the relaxing atmosphere this exceptional design creates. The ultimate tribute to the success of this design comes by the way of our competitors; duplication is the sincerest form of flattery.



Makes into Double bed

Golf Club Storage/ storage trunk below



The kitchen in the SRL, as in all models, comes fully equipped with all the high quality **standard** features you expect: 6' of interior headroom; a Dometic 3-way 3 cubic ft. refrigerator; a Sanyo microwave; 2 burner LP stove; a range hood with exhaust fan and light; a stainless steel sink; and a hand crafted spice rack. A unique slide out pantry with an arborite top maximizes all available counter space. **PLEASURE-WAY** uses Suburban water heaters and furnaces, both feature auto ignitions, a convenience you should not be without. A monitor panel informs you of the levels of your fresh, grey, and black water tanks as well as the charge level of your auxiliary battery. You can enjoy breakfast in the kitchen by simply rotating the front captain's chairs and placing a table in the stand. This is a nice feature, especially when you want to leave the bed made up in the back.

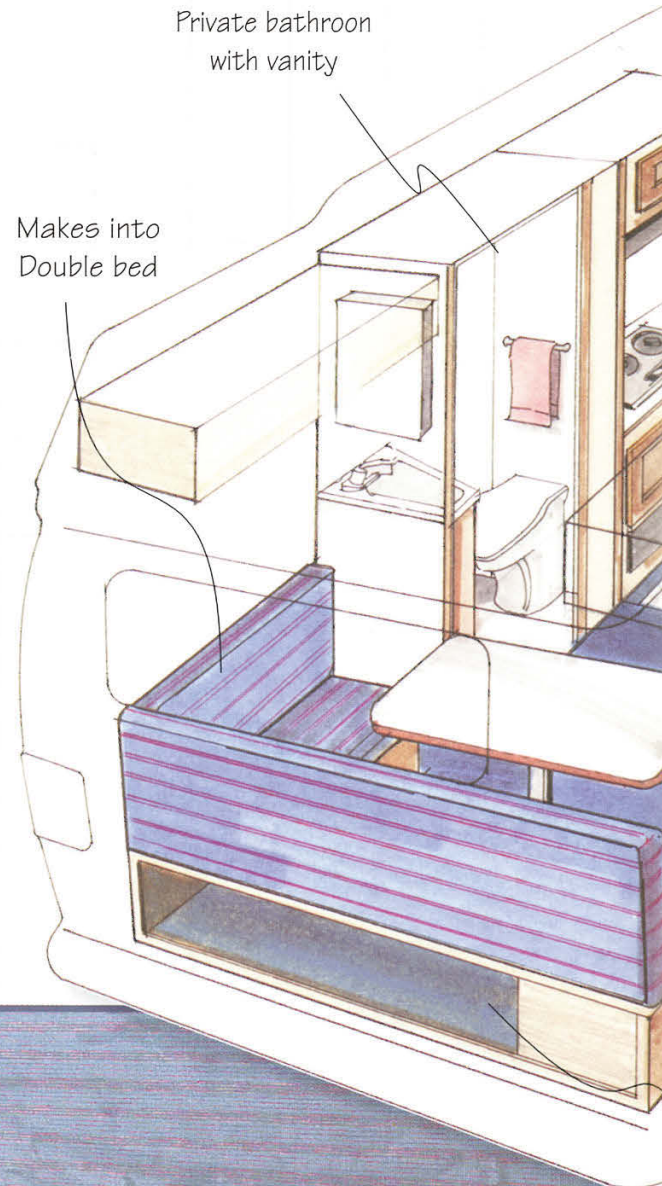
Shoulder room is one of the main concepts involved in the *private Bathroom*. By recessing a portion of the right side of the bathroom wall at the shoulder area, **PLEASURE-WAY** has produced the right amount of shoulder space to be comfortable without compromising aisle width. The shower compartment is completely water tight and has a one piece molded shower pan. The bathroom in the SRL and STW comes with a Shower, a Thetford flush toilet, a medicine cabinet, an exhaust fan and a large sink. Unquestionably, this is the only complete bathroom available in a Van Motorhome.

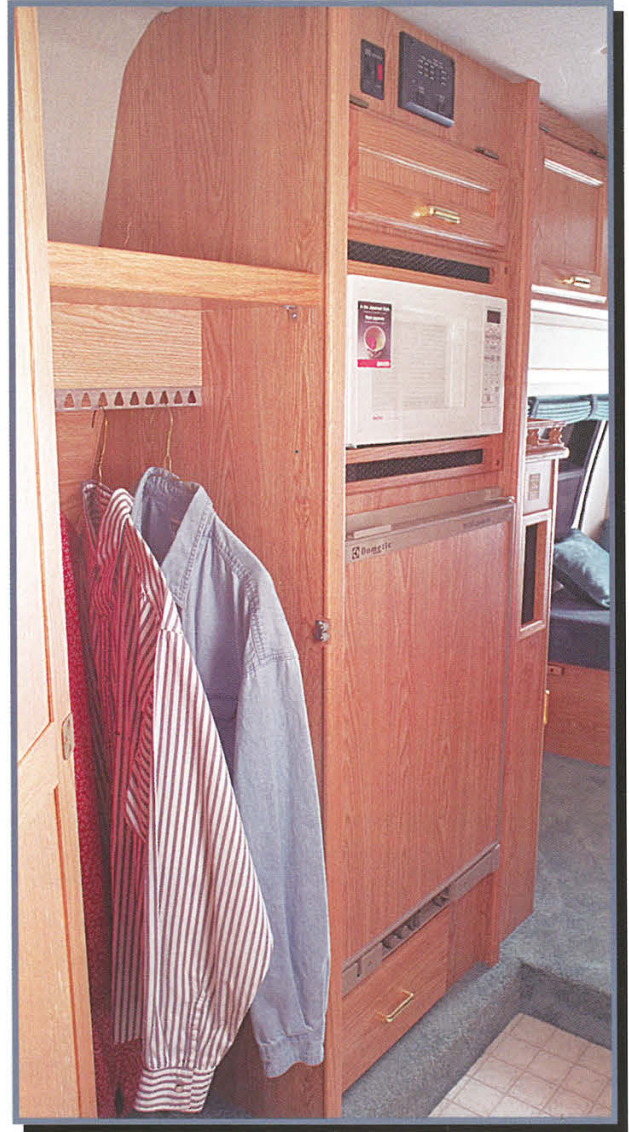
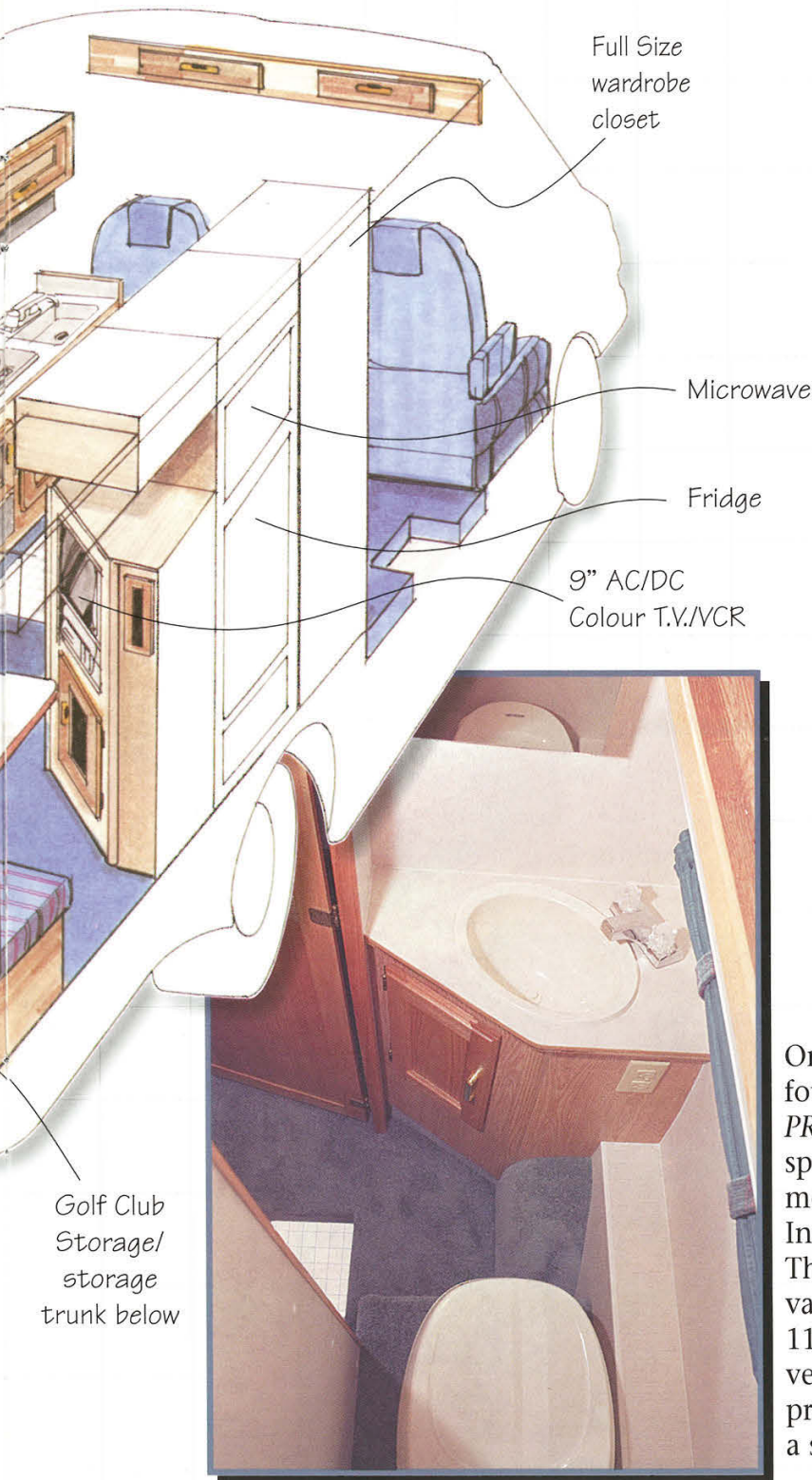
Pleasure-Way

VRL



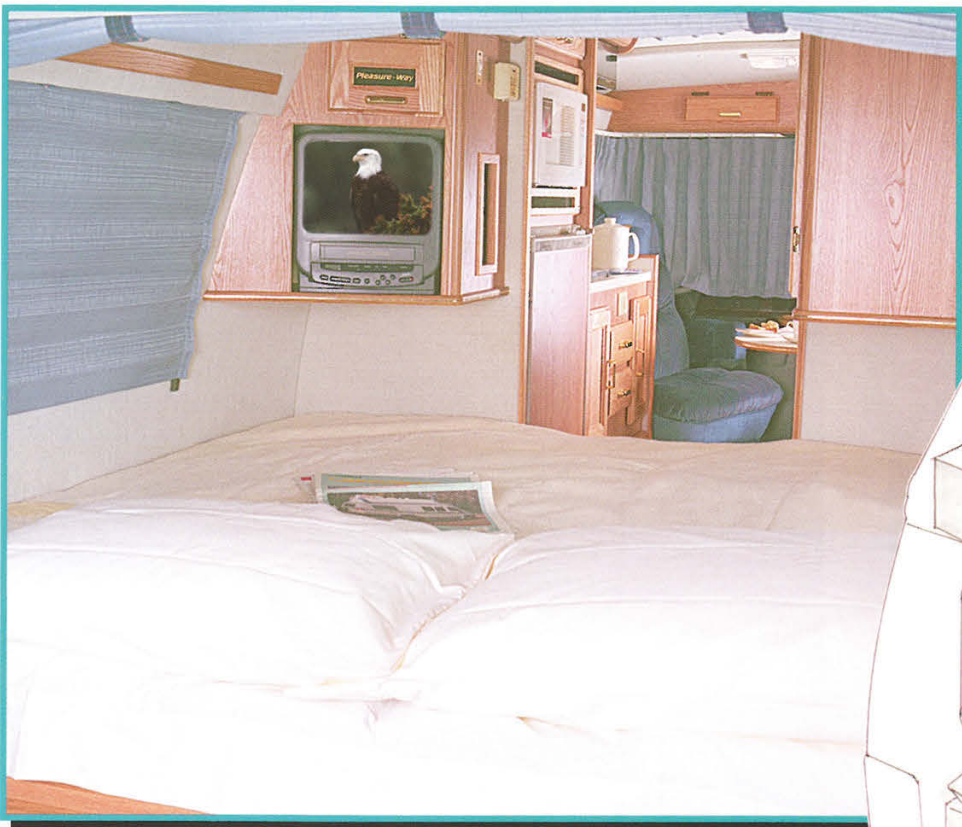
When you see **PLEASURE-WAY** Van Motorhomes for the first time the sleek aerodynamic profile and sharp exterior graphics will capture your attention. Great looks are just the tip of the iceberg when your talking about **PLEASURE-WAY**. **PLEASURE-WAY'S** sleek low profile roof combined with their dropped center floor gives you six feet of interior headroom and the aerodynamic profile achieves exceptional fuel economy and superior road handling. To emphasize their commitment to quality **PLEASURE-WAY** paints their primary exterior graphics instead of using decals exclusively, ensuring the exterior graphics a much longer life. With Pleasure-way's intense attention to detail, they even paint and stripe the roof air conditioner to match. The VRL features the same inviting Rear Livingroom/double bed, Entertainment Center, and Kitchen as found in the SRL.





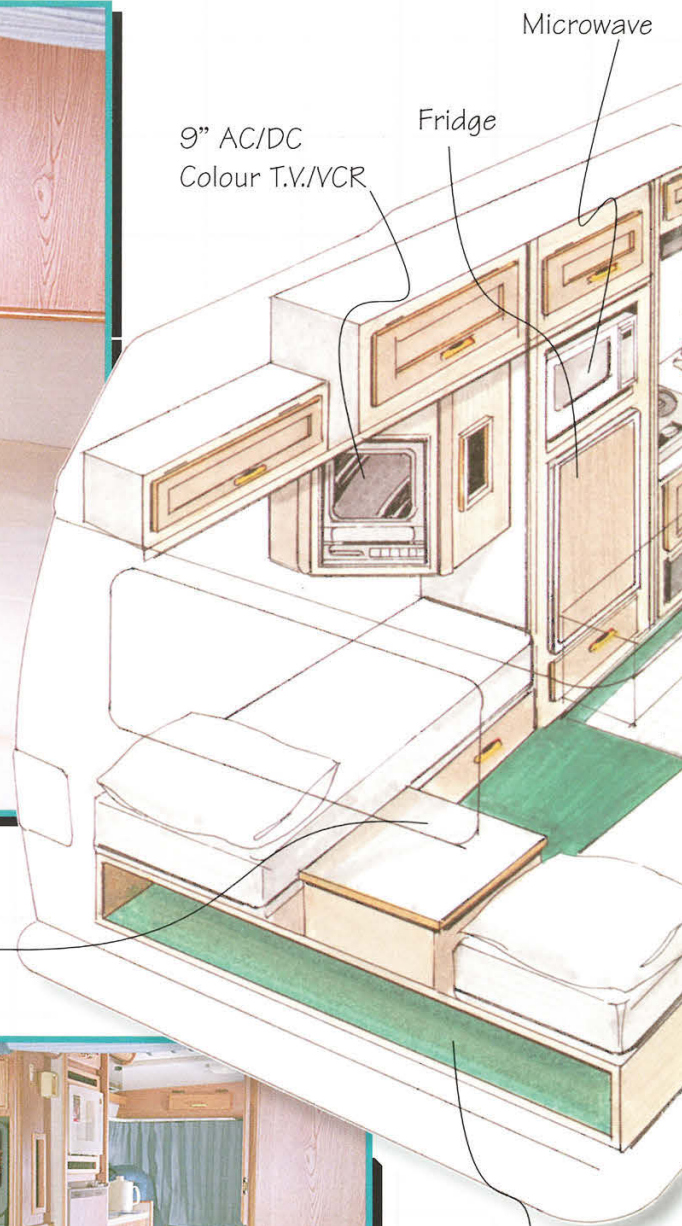
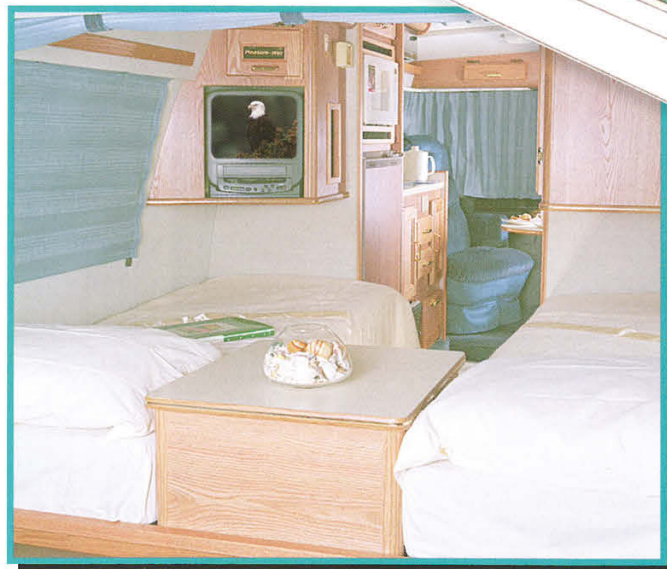
One of the many remarkable features of the VRL is found in the bathroom. Perhaps the fact that it's a **PRIVATE ENCLOSED BATHROOM** makes it so special. When the bathroom is in use, family members can access all living areas of the coach. Inside this unique bathroom you will find: a Thetford flush toilet, a large sink with a full size vanity; a medicine cabinet; an exhaust fan; and a 110 v receptacle. **PLEASURE-WAY** is one of the very few Van Motorhome manufacturers that provide a second sink. **PLEASURE-WAY** knows that a second sink is not a luxury but a necessity.

Pleasure-Way

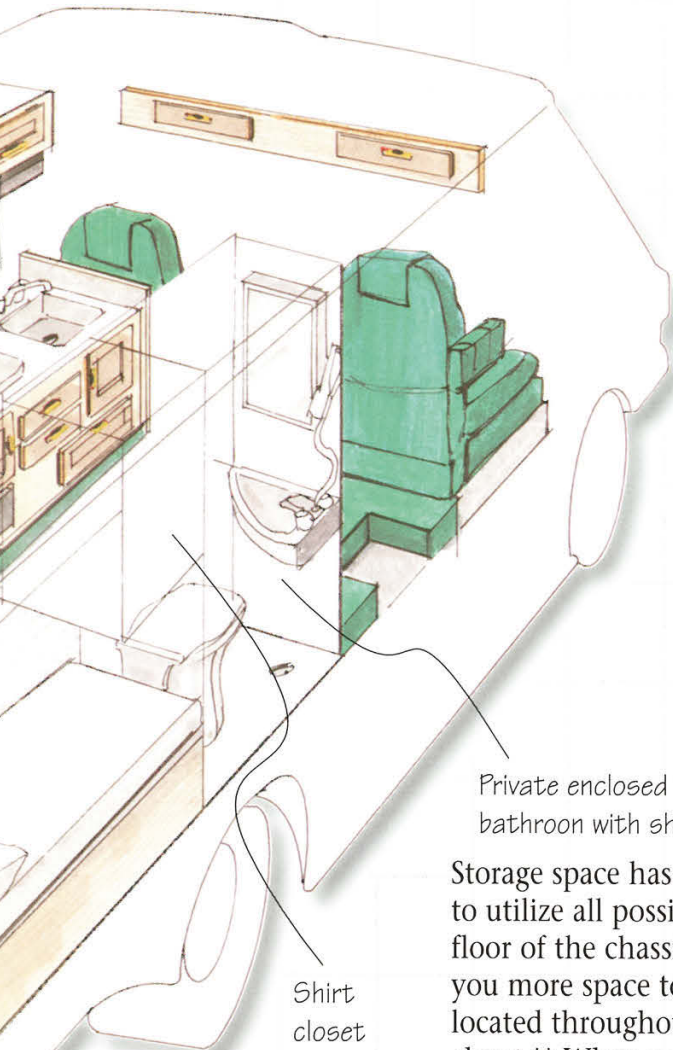


The STW is **PLEASURE-WAY'S** twin bed model. The STW floorplan was designed with the traveling couple in mind. This design gives you the best of two worlds: the convenience of two single beds or, in a matter of seconds and by simply removing the night table, the comfort of a king size bed. Another favorable feature of the twin beds is that they eliminate the "crawl overs" for the early riser. To maximize all available storage space, you will find drawers directly beneath the single beds, which are ideal for storing bedding. While relaxing in the dinette area, you can appreciate the luxury of a built-in T.V./VCR. With a fully equipped kitchen and *PRIVATE BATHROOM* with *SHOWER*, your home away from home is complete.

Makes single beds, kingsize bed, or dinette

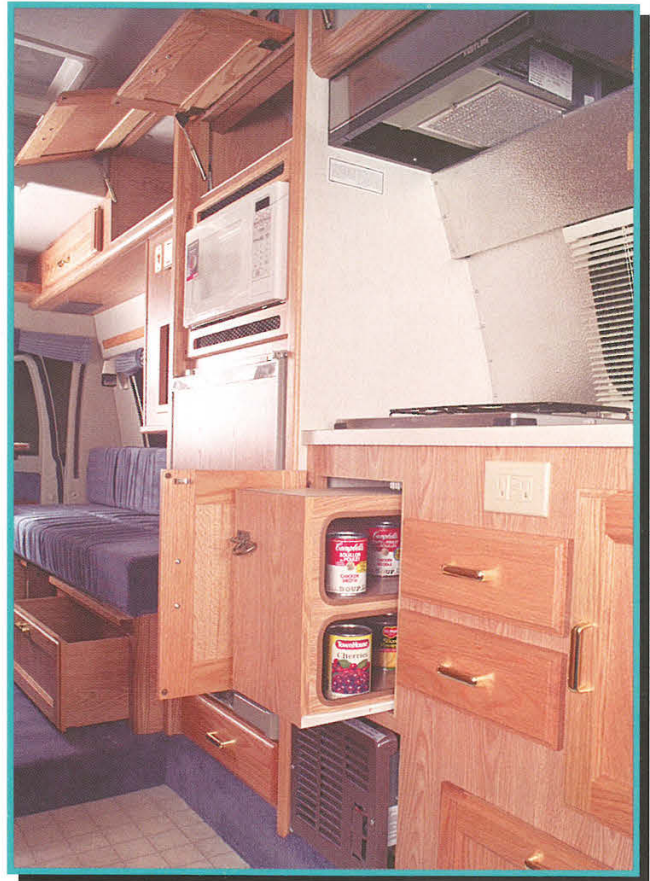


Golf club storage/ storage trunk below



Private enclosed bathroom with shower

Shirt closet



Storage space has always been a priority. And that is why **PLEASURE-WAY'S** goal is to utilize all possible storage space. By placing the holding tanks underneath the floor of the chassis as opposed to having them inside, **PLEASURE-WAY** has given you more space to live in. You will find as many as 23 cupboards and drawers located throughout the motorhome and, most importantly a large wardrobe closet.** When you open the rear door you will be amazed to find a huge storage area, large enough to hold two complete sets of golf clubs.* Directly beneath lies a storage trunk ideal for carrying tool & tackle boxes. **PLEASURE-WAY** leaves nothing to chance, so for storage and safety reasons the optional generator is mounted underneath the floor and between the chassis frame, instead of in a compartment box inside the coach. Besides the obvious noise factor, it frees up more room in the interior for storage, as well as equalizing weight distribution from side to side. **PLEASURE-WAY** even locates the spare tire on the back door to maximize every inch available. All of this is done so that **PLEASURE-WAY** can realize their goal of giving you the most storage space available.

** shirt closet only in STW

* n/a in MPL

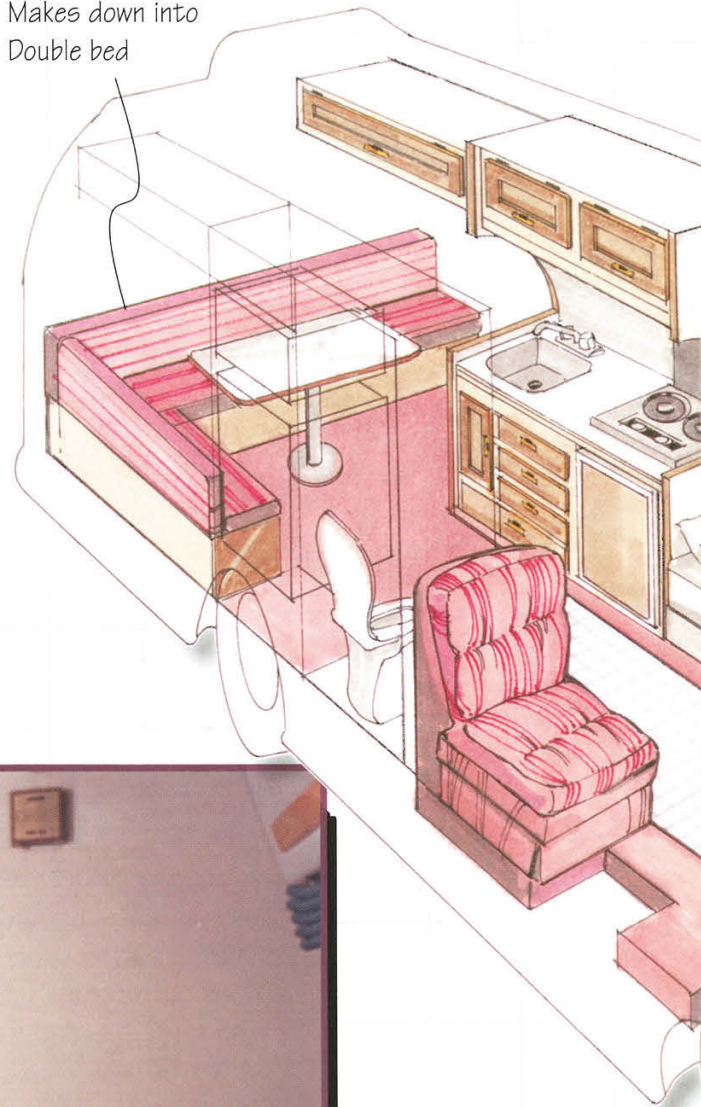


Pleasure-Way

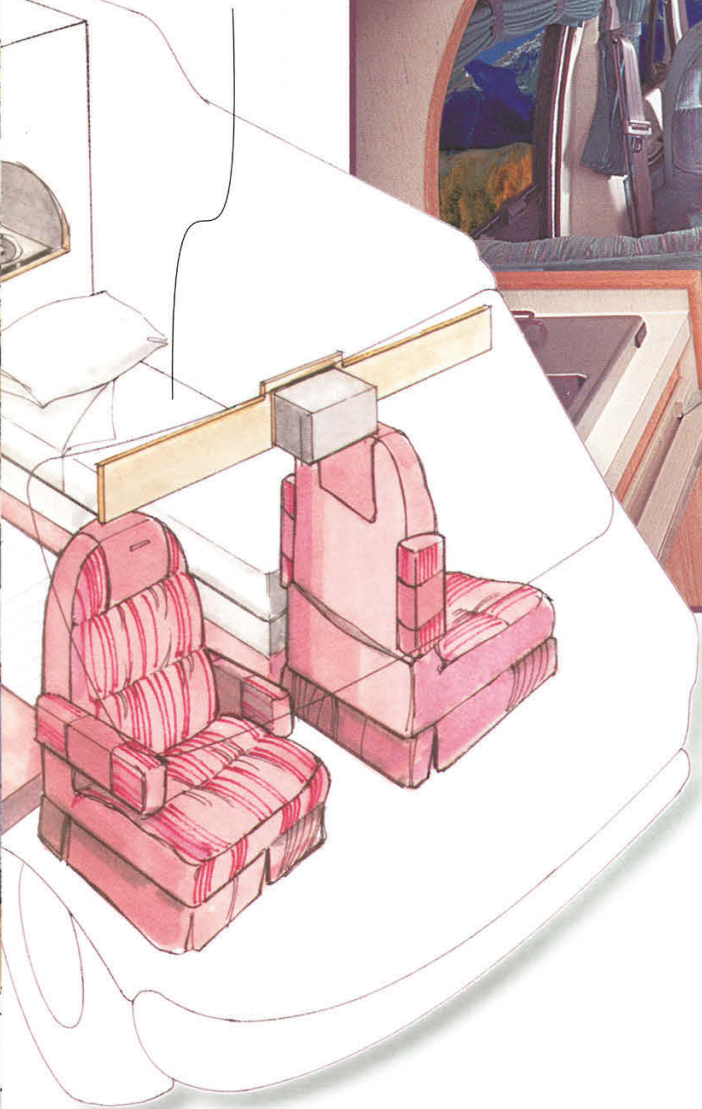
MPL

The MPL is the most versatile model in **PLEASURE-WAY'S** lineup. The most prominent difference in this floorplan is that it features four seats up front and still maintains the rear livingroom in the back. The two sleeper seats behind the captain's chairs are constructed from a premium steel frame. These seats effortlessly convert into two single beds by easily folding down the sleeper seats and rotating the front captain's chairs sideways. By doing this you have created the extra sleeping arrangements that is perfect for the family with small children or when grandparents take the grandchildren away for the weekend. An optional built in colour T.V. located in the front overhead cabinet makes this floor plan a popular choice. With a Flush water toilet and extensive kitchen, including hot water, this unit is complete. All it needs now is the open road and you.

Makes down into
Double bed



Sleeper seats
form single bed



Superior craftsmanship is synonymous with the **PLEASURE-WAY** name. The high quality interiors have made **PLEASURE-WAY** the elite of Van Motorhomes. When you seriously start comparing Van Motorhomes, you can not help but notice how refined **PLEASURE-WAY'S** interiors are, and how precise and smooth the cabinetry embraces the inside walls. As a tribute to its commitment to quality and to YOU. **PLEASURE-WAY** only uses the finest quality materials along with a generous amount of natural oak.

Pleasure-Way

PLEASURE-WAY Van Motorhomes are designed to be user friendly. So to simplify the task of dumping your holding tanks, **PLEASURE-WAY** has incorporated a simple yet innovative door into their fiberglass running board. No longer will you have to crawl on your hands and knees to see where valve and hose attachments are. Simply open the door and everything is neatly displayed right in front of you, making one of the less cherished tasks so much easier.



DODGE B 3500 CHASSIS SPECIFICATION

Gross Vehicle Weight 8510 Lbs. 3861 Kgs. ~ Length Bumper to Bumper 19' 2" 5872 mm ~ Wheel Base 127" 3241 mm ~ Width 6' 6" 2032 mm ~ Height 8' 4" 2540 mm ~ Fuel Tank Capacity 29 U.S. Gal. 132 L ~ 318(5.2L) Magnum V8 MPI engine ~ Power 220 HP @ 4,400 RPM ~ Torque 295 lb-ft @ 3,200 RPM ~ Axle Ratio 3.92 ~ Automatic Transmission with Electronic Overdrive ~ Towing Capacity (no passengers, no cargo) 5,000 lbs ~ 16" Steel Belted Radial Tires ~ Front Stabilizer Bar ~ Rear Anti Lock Brakes ~ Factory Air ~ Tilt Steering ~ Cruise Control ~ Power Door Locks ~ Power Windows ~ AM/FM Stereo Cassette ~ Power Remote Mirrors ~ Matching Spare Tire ~ Drivers Side Air Bag.

OPTIONAL EQUIPMENT

Fiberglass Running Boards ~ Awning ~ Hide-a-Tenna TV Antenna ~ 9" Emerson Colour AC/DC TV/VCR (SRL, VRL & STW only) ~ 9" Audiovox Colour AC/DC TV (MPL only) ~ Fan Tastic Fan ~ Coleman 7,100 BTU Roof Air Conditioner ~ Screen Package ~ 2.8 KW Onan Microlite Generator ~ Generator Ready ~ Exterior Shower ~ Hitch Receiver.

COACH SPECIFICATIONS & FEATURES

| | Model VRL | Model SRL | Model MPL | Model STW |
|---|--------------|--------------|--------------|--------------|
| Dometic 3-way Refrigerator (3 cu ft.) | x | x | x | x |
| Sanyo Microwave Oven | x | x | x | x |
| 2 Burner LP Stove | x | x | x | x |
| Power Range Hood | x | x | x | x |
| Suburban 16,000 BTU Auto Ign Furnace | x | x | N/A | x |
| Hydro Flame 16,000 BTU Auto Ign Furnace | N/A | N/A | x | N/A |
| Thetford Flush Toilet | x | x | x | x |
| Shur flo Demand Water System | x | x | x | x |
| Suburban 6 Gal. Auto Ign Water Heater | x | x | x | x |
| Interior Height 6' | x | x | x | x |
| Vanity | x | N/A | N/A | N/A |
| Medicine Cabinet | x | x | N/A | x |
| Large 2nd Sink | x | x | N/A | x |
| Shower | N/A | x | N/A | x |
| Smoke Detector | x | x | x | x |
| Fire Extinguisher | x | x | x | x |
| Power Roof Vent | x | x | x | x |
| Auxiliary battery | x | x | x | x |
| 110 V/12V 30 Amp Converter | x | x | x | x |
| Monitor Panel | x | x | x | x |
| Fresh Water Tank 82 L 22 U.S. Gal | x | x | x | x |
| Grey Water Tank 68 L 18 U.S. Gal | x | x | x | x |
| Black Water Tank 45 L 12 U.S. Gal | N/A | x | x | x |
| Black Water Tank 32 L 8.5 U.S. Gal | x | N/A | N/A | N/A |
| Propane Tank 30 L 8 U.S. Gal | x | x | x | x |
| Locking City Water/Fresh water Fill | x | x | x | x |
| 2 Rear Seat Belts | x | x | x | N/A |
| Captains Chair's Swivel & Recline | x | x | x | x |
| Rear Livingroom/Double Bed (73" x 50") | x | x | x | N/A |
| Twin Beds (26" x 73.5") king Size (73" x 73.5") | N/A | N/A | N/A | x |
| Sleeper Seats | N/A | N/A | x | N/A |
| Hehr Awning Style Windows | x | x | x | x |
| Extra Cocktail Table | x | x | x | x |
| Locking Power Cord Compartment | x | x | x | x |
| Sewer Hose Storage Compartment | x | x | x | x |
| Continental Spare Tire Carrier | x | x | x | x |
| Golf Club Storage | x | x | N/A | x |
| Spare Trunk | x | x | x | x |
| Padded Engine Cover | x | x | x | x |
| Porch Light | x | x | x | x |
| Exterior 110V Receptacle | x | x | x | x |
| Cable T.V. Hook Up | x | x | x | x |
| Water Heater By-Pass | x | x | x | x |

PLEASE NOTE:

All **PLEASURE-WAY** motorhomes in Canada are C.S.A. Certified, and may exceed the approved installation criteria.

All motorhomes in the United States bear the R.V.I.A. seal of approval, and may exceed the individual state requirements.

Because of our policy of continuous improvements **PLEASURE-WAY** reserves the right to make product changes at any time without prior notice and without incurring obligations.

Some motorhomes depicted in this brochure may be shown with optional equipment. Some limitations may apply when deleting or adding certain options. Please see your dealer for additional information or contact **PLEASURE-WAY INDUSTRIES LTD.**

WARRANTY

1995 Chrysler Warranty

Basic warranty coverage 3 years or 60,000 km* in the United States it would read 3 years 36,000 miles*

This covers all factory installed parts except tires, wiper blades, brake rotors, pads linings, drums and clutch discs. Tires are covered by the tire manufacturer, and the other excluded parts are covered for 1 year or 20,000 km* / 12,000 miles*.

Roadside Assistance for 3 years or 60,000 km*/36,000 miles*

A 24 hour toll free telephone number puts towing, fuel delivery, lockout assistance, tire changes and jump-starting at your fingertips from any location in Canada or the U.S.

Corrosion coverage for 7 years or 160,000 km* /100,000 miles*

All body sheet metal panels are covered against rust-through for 3 years, regardless of how far you drive, and outer body panels are covered for 7 years or 160,000 km* / 100,000 miles*.

* Whichever comes first

PLEASURE-WAY motorhome warranty is 2 years inclusive on all craftsmanship entailed in the manufacturing of the motorhome.

All appliances are covered by individual warranties offered by their respective manufacturers.

Pleasure-Way

302 Portage Ave.,
Saskatoon, Saskatchewan S7J 4C6
Tel: (306) 934-6578 Fax: (306) 934-7085



AUTHORIZED DEALER